

Direct Sourcing Solutions



Volvo Replacement Cab & Body Parts Catalogue 2020



Sales Line +44 (0) 1653 668179

email: sales@direct-sourcing-solutions.com

web: www.direct-sourcing-solutions.com

Direct Sourcing Solutions Ltd trading as DSS - Terms and Conditions of Sale

GENERAL

These conditions prevail over any conditions which the purchaser's order may purport to impose and which are at variance with the same. No modifications shall be binding upon Direct Sourcing Solutions Limited unless specifically accepted in writing. Direct Sourcing Solutions Ltd will be referred to as DSS hereafter. Typing and clerical errors are subject to correction. All orders or contracts are subject to acceptance by DSS at its office at Kirby Misperton, Malton, regardless if taken elsewhere by a sales person or a selling agent. Quotations do not constitute an offer and shall not bind DSS, until an order has been placed and accepted.

PAYMENT

Unless other terms are expressly agreed upon, payment is Nett 30 days monthly account. DSS reserves the right to impose on the buyer the special term "Cash on Delivery", if it considers it necessary. Payment should be made to Direct Sourcing Solutions Ltd. In addition to its other remedies DSS, reserves the right to change interest on delayed payment from the due date on a daily basis at Fortis Bank plc base rate from time to time in force plus three percent.

PROPERTY

Notwithstanding delivery and the passing of risk in the goods, the property in the goods shall not pass to the buyer until DSS has received in cash or cleared funds payment in full of the price of the goods sold or agreed to be sold by DSS to the buyer under the contract.

Until the property in the goods passes to the buyer:

- a) the buyer shall hold the goods as DSS bailee, and shall keep those goods separate from all other goods and property stored, protected and insured and identified as DSS's property and
- b) the buyer shall be entitled to resell or use the goods in the ordinary course of its business, but shall have a fiduciary duty to DSS to account for the proceeds of sale or otherwise of the goods, whether tangible or intangible, including insurance proceeds, and shall keep all such proceeds separate from any monies or property of the buyer and third parties and , in the case of tangible proceeds, property stored, protected and insured; and
- c) DSS shall be entitled at any time to require the buyer to deliver up the goods to DSS and, if the buyer fails to do so forthwith, to enter upon any premises of the buyer or any third party where the goods are stored and repossess the goods and for that purpose the buyer hereby authorises and licences DSS to enter upon any land or building upon which the goods are situated to recover those goods.

The buyer shall not be entitled to or in any way charge by way of security for any indebtedness any of the goods which remain the property of DSS, but if the buyer does so all monies owing by the buyer to DSS shall, without prejudice to any other right or remedy of DSS, forthwith become due and payable.

INSPECTION AND RETURN OF GOODS

If upon receipt of goods from DSS the goods do not appear to conform to specifications, the buyer must notify DSS within 5 working days after receipt in writing. The return of correctly supplied goods when accepted by DSS will incur a charge of 20% of the value of the goods excluding VAT at current rate. Goods supplied as special orders are not returnable. Goods cannot be returned without prior authorisation from DSS.

EXCHANGE ITEMS

A surcharge is levied on the exchange items (e.g. items that can be reconditioned). The surcharge is refundable subject to the following conditions:

- a) The exchange items are returned within 10 days.
- b) The exchange items are not broken, damaged or dismantled.

TELEPHONED ORDERS

Verbal or telephoned orders, or any variation, must be confirmed in writing by the Buyer otherwise DSS accept no responsibility for errors or subsequent misunderstandings. DSS assumes no responsibility for any orders which are duplicated, as a result of a confirming order not being identified as such.

ORDER CLASSIFICATION

VOR emergencies must be negotiated at the time of the order being placed. If the order product is available, it will be dispatched the same day, providing the order is received early enough to allow dispatch. We request VOR orders to be placed before 4.00pm

CATALOGUE, PRICE LIST AND OTHER ADVERTISEMENT MATTERS

Catalogues, price lists and other material used for advertising are only an indication of the type of goods, and no other particulars contained therein shall be binding to DSS.

VAT

Unless otherwise stated, all prices quoted by DSS do not include value added tax at the current rate.

PRICES

DSS reserves the right to vary the quoted price and goods will be invoiced at the price ruling at the day of dispatch unless otherwise agreed by DSS in writing.

DELIVERY DATES

Whilst DSS will do its utmost to keep its promised delivery dates, they are to be treated as estimates only. DSS accept no responsibility for loss or damage resulting from delay in the delivery of goods. Delays due to circumstances outside the control of DSS shall not entitle the buyer to cancel any order or to refuse to accept delivery.

WARRANTY CLAIM

All new parts come with a 12 months manufacturer warranty. The warranty period starts from the date of invoice. In the event of a warranty claim DSS must be promptly notified in writing on the appropriate DSS form, and will only accept claims due to faulty materials or workmanship. Goods must be returned carriage paid for immediately upon the discovery of the defect. No credit will be given until such time as DSS is satisfied that such defects arose solely through mentioned causes and DSS has received credit from the manufacturer or supplier. DSS shall in no circumstances be liable for any consequential loss or damages. All replacement items for warranty claims will be booked out at the current DSS price.

DELIVERY CLAIMS

Shortages or damaged in transit items must be reported on the same day of receipt of goods.

Direct Sourcing Solutions

Volvo Replacement Parts Catalogue 2020

Section 18; Cab & Body



990031ALT **Seat Assembly - Mechanical - L/H**

All vehicles with mechanical seat
w/o Seat Belt, c/w Head Rest



990018ALT **Seat Assembly - Mechanical - R/H**

All vehicles with mechanical seat
w/o Seat Belt, c/w Head Rest



990009ALT **Seat Assembly - Air - R/H**

Early Vehicles
w/o Seat Belt and Head Rest



990012ALT **Seat Assembly - Air - L/H**

FH V1, FM V1 FL6
c/w Integral Seat Belt & Removable Head Rest



990011ALT **Seat Assembly - Air - R/H**

FH V1, FM V1 FL6
c/w Integral Seat Belt & Removable Head Rest



Suffix Key; R = Reconditioned Part
OEM = Original Equipment Manufacturer ALT = Alternative Supplier Part
OE Numbers used for Cross Reference Purposes Only



990032 **Seat Assembly - Air - R/H**

FH V1, FM V1 FL6
c/w Integral Seat Belt & Removable Head Rest



990010ALT **Seat Assembly - Air - L/H**

FH V2, FH 2008-, FM V2, FM 2010-
c/w Integral Seat Belt & Integral Head Rest



990003 **Seat Assembly - Air - R/H**

FH V2, FH 2008-, FM V2, FM 2010-
c/w Integral Seat Belt & Integral Head Rest



990022ALT **Luxury Seat Assembly - Air - R/H**

FH V2, FH 2008-, FM V2, FM 2010- Simulated Leather Trim
c/w Integral Seat Belt & Integral Head Rest



990027ALT **Luxury Seat Assembly - Air - R/H**

FH V2, FH 2008-, FM V2, FM 2010- Black Fabric Trim
c/w Integral Seat Belt & Integral Head Rest



Suffix Key; R = Reconditioned Part
OEM = Original Equipment Manufacturer ALT = Alternative Supplier Part
OE Numbers used for Cross Reference Purposes Only



209753 **Arm Rest Kit**

All Vehicles



990015 **Seat Z Bracket**

All Vehicles
2 Per Seat Required



209750 **Seat Plinth**

FM V1 & V2, FM 2010-



209738 **Seat Mount Kit**

FL6



Suffix Key; R = Reconditioned Part

OEM = Original Equipment Manufacturer ALT = Alternative Supplier Part

OE Numbers used for Cross Reference Purposes Only



190163 **Seat Base - Trimmed**

FH V1, FM V1, FL6
Aftermarket Trim - Charcoal



1290002 **Seat Base - Trimmed**

FH V2, FH 2008-, FM V2, FM 2010-
Aftermarket Trim - Charcoal



1290004 **Seat Base - Trimmed c/w Heater**

FH V2, FH 2008-, FM V2, FM 2010-
Aftermarket Trim - Charcoal



1290006 **Seat Base - Trimmed**

FH V2, FH 2008-, FM V2, FM 2010-
Aftermarket Trim - Fabric / Simulated Leather



1290007 **Seat Base - Trimmed c/w Heater**

FH V2, FH 2008-, FM V2, FM 2010-
Aftermarket Trim - Fabric / Simulated Leather



Suffix Key; R = Reconditioned Part
OEM = Original Equipment Manufacturer ALT = Alternative Supplier Part
OE Numbers used for Cross Reference Purposes Only



1290008 **Seat Base - Trimmed**

FH V2, FH 2008-, FM V2, FM 2010-
Aftermarket Trim - Simulated Leather



1290009 **Seat Base - Trimmed c/w Heater**

FH V2, FH 2008-, FM V2, FM 2010-
Aftermarket Trim - Simulated Leather



1290005 **Seat Base Heater Element**

1517088
FH V2, FH 2008-, FM V2, FM 2010-



Suffix Key; R = Reconditioned Part
OEM = Original Equipment Manufacturer ALT = Alternative Supplier Part
OE Numbers used for Cross Reference Purposes Only



209755 **Seat Belt Assembly**

82206512 20452982

Early Vehicles

3 Point Fixing, Not Suitable For Integral Seat Belt



290261 **Seat Belt - L/H**

84161731 20443655

FH V2, FH 2008-, FH V4,

For Seat with Integral Seat Belt



290105 **Seat Belt - R/H**

2084161728 20443661

FH V2, FH 2008-, FH V4, FM V2, FM 2010-, FM V4, FMX FL6

For Seat with Integral Seat Belt



190195 **Seat Belt Buckle**

All vehicles,



290161 **Seat Control Switch**

3090657

FH V1 & V2 FM V1 & V2



Suffix Key; R = Reconditioned Part

OEM = Original Equipment Manufacturer ALT = Alternative Supplier Part

OE Numbers used for Cross Reference Purposes Only



290041 **Seat Level Valve**

20748450 20443641

FH V2, FH 2008-, FM V2, FM 2010-, FMX



290061 **Seat Shock Absorber**

1699212

FL6



109794 **Seat Shock Absorber**

3093893 3090504

FH V1, FM V1, FL6



Suffix Key; R = Reconditioned Part

OEM = Original Equipment Manufacturer ALT = Alternative Supplier Part

OE Numbers used for Cross Reference Purposes Only



990023 **Seat Cover - Grey**

All vehicles,
For seats with or w/o integral seat belts



990024 **Seat Cover - Blue**

All vehicles,
For seats with or w/o integral seat belts



990025 **Seat Cover - Black**

All vehicles,
For seats with or w/o integral seat belts



Suffix Key; R = Reconditioned Part

OEM = Original Equipment Manufacturer ALT = Alternative Supplier Part

OE Numbers used for Cross Reference Purposes Only

Direct Sourcing Solutions
Volvo Replacement Parts Catalogue 2020
Section 18; Cab & Body



209124 **Door Shell - L/H**

20360542 3980432 3090453

FH V1 & V2, FH 2008-



209125 **Door Shell - R/H**

20360543 3980433 3090454

FH V1 & V2, FH 2008-



290081ALT **Door Shell - L/H**

20360849 20356230

FM V1 & V2, FM 2010-, FMX



290082ALT **Door Shell - R/H**

20360850 20356231

FM V1 & V2, FM 2010-, FMX



290253ALT **Door Shell - L/H**

82183078

FH V4



Suffix Key; R = Reconditioned Part
OEM = Original Equipment Manufacturer ALT = Alternative Supplier Part
OE Numbers used for Cross Reference Purposes Only



290252ALT **Door Shell - R/H**
82183386
FH V4



209118 **Door Extension - L/H**
20398907 1619690 1086533
FH V1



209119 **Door Extension - R/H**
20398908 1619691 1086534
FH V1



209446 **Door Extension - L/H**
21299955 20467037
FH V2, FH 2008-



209447 **Door Extension - R/H**
21300059 20467038
FH V2, FH 2008-



Suffix Key; R = Reconditioned Part
OEM = Original Equipment Manufacturer ALT = Alternative Supplier Part
OE Numbers used for Cross Reference Purposes Only



290119ALT **Door Extention Panel - LH**

82107271 21642377

FH V4



290120ALT **Door Extention Panel - RH**

82178247 21642399

FH V4



Suffix Key; R = Reconditioned Part

OEM = Original Equipment Manufacturer ALT = Alternative Supplier Part

OE Numbers used for Cross Reference Purposes Only



209458 **Door Hinge - Top L/H**

20398135 20372037

FH V1 & V2, FH 2008-, FM V1 & V2, FM 2010-, FMX



209459 **Door Hinge - Top R/H**

20398136 20372038

FH V1 & V2, FH 2008-, FM V1 & V2, FM 2010-, FMX



209460 **Door Hinge - Lower L/H & R/H**

20372039

FH V1 & V2, FH 2008-, FM V1 & V2, FM 2010-, FMX



290230 **Door Hinge - Top L/H & R/H**

20555722

New FL/FE



290229 **Door Hinge - Lower L/H & R/H**

20555723

New FL/FE



Suffix Key; R = Reconditioned Part
OEM = Original Equipment Manufacturer ALT = Alternative Supplier Part
OE Numbers used for Cross Reference Purposes Only



209133 **Door Handle - L/H**
20398466 1062565
FH V1 & V2, FH 2008-, FM V1 & V2, FM 2010-, FMX



209134 **Door Handle - R/H**
20398467 1062566
FH V1 & V2, FH 2008-, FM V1 & V2, FM 2010-, FMX



209673 **Door Lock Key Set**
3090483
FH V1 & V2, FH 2008-, FM V1 & V2, FM 2010-, FMX
1 Cylinder, 2 keys



208547 **Door Lock Key Set**
3090484
FH V1 & V2, FH 2008-, FM V1 & V2, FM 2010-, FMX
2 Cylinders, 4 keys



209658 **Door Lock - L/H**
21505893 24427400 21261274 20588325 3175723 8143652
FH V1 & V2, FH 2008-, FM V1 & V2, FM 2010-, FMX



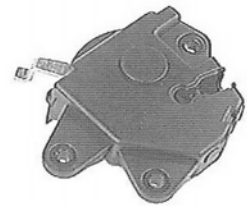
Suffix Key; R = Reconditioned Part
OEM = Original Equipment Manufacturer ALT = Alternative Supplier Part
OE Numbers used for Cross Reference Purposes Only



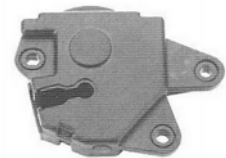
209622 **Door Lock - R/H**
21505894 24427401 21261275 20588326 3175724 8143653
FH V1 & V2, FH 2008-, FM V1 & V2, FM 2010-, FMX



209659 **Door Handle Mechanism - L/H**
1063327 8142043
FH V1 & V2, FH 2008-, FM V1 & V2, FM 2010-, FMX



209660 **Door Handle Mechanism - R/H**
1063328 8142044
FH V1 & V2, FH 2008-, FM V1 & V2, FM 2010-, FMX



6290006 **Door Cable - L/H & R/H**
82365212
FL6



209734 **Door Cable - L/H & R/H**
20922589 8191136
FH V1 & V2, FH 2008-, FM V1 & V2, FM 2010-, FMX



Suffix Key; R = Reconditioned Part
OEM = Original Equipment Manufacturer ALT = Alternative Supplier Part
OE Numbers used for Cross Reference Purposes Only



209661 **Inner Door Handle**
20379593
FH V1 & V2, FH 2008-, FM V1 & V2, FM 2010-, FMX



209758 **Door Check Strap**
1062636
FH V1 & V2, FM V1 & V2



290133 **Door Check Strap**
21350581 21100900
FH 2008-, FM 2010- , FMX



209671 **Inner Door Panel Clip**
20994880 20564429
FH V1 & V2, FH 2008- FM V1 & V2, FM 2010-, FMX



209278 **Window Deflector Kit**
20453841 20379049 3175338 8155545 8154892 8154567
FH V1 & V2, FH 2008- FM V1 & V2, FM 2010-, FMX



Suffix Key; R = Reconditioned Part
OEM = Original Equipment Manufacturer ALT = Alternative Supplier Part
OE Numbers used for Cross Reference Purposes Only



209132 **Door Handle - L/H & R/H**

1614564
FL7, FL10, FL12



609042 **Door Handle - L/H**

24426873
New FL/FE



609041 **Door Handle - R/H**

24426875
New FL/FE



Suffix Key; R = Reconditioned Part

OEM = Original Equipment Manufacturer ALT = Alternative Supplier Part

OE Numbers used for Cross Reference Purposes Only



209327 **Window Mechanism**
3176541 1063291 1062008
FH V1 & V2, FH 2008-
L/H, Electric Version · DOES NOT INCLUDE MOTOR



209327ALT **Window Mechanism**
3176541 1063291 1062008
FH V1 & V2, FH 2008-
L/H, Electric Version · INCLUDES MOTOR



209328 **Window Mechanism**
3176542 1063292 1062009
FH V1 & V2, FH 2008-
R/H, Electric Version · DOES NOT INCLUDE MOTOR



209328ALT **Window Mechanism**
3176542 1063292 1062009
FH V1 & V2, FH 2008-
R/H, Electric Version · INCLUDES MOTOR



209393 **Window Mechanism**
3176545
FM V1 & V2, FM 2010-
L/H, Electric Version · DOES NOT INCLUDE MOTOR



Suffix Key; R = Reconditioned Part
OEM = Original Equipment Manufacturer ALT = Alternative Supplier Part
OE Numbers used for Cross Reference Purposes Only



209393ALT **Window Mechanism**

3176545
FM V1 & V2, FM 2010-
L/H, Electric Version · INCLUDES MOTOR



209394 **Window Mechanism**

3176546
FM V1 & V2, FM 2010-
R/H, Electric Version · DOES NOT INCLUDE MOTOR



209394ALT **Window Mechanism**

3176546
FM V1 & V2, FM 2010-
R/H, Electric Version · INCLUDES MOTOR



209294 **Window Motor**

3176549 1062010
FH V1 & V2, FH 2008-, FM V1 & V2, FM 2010-
L/H



209295 **Window Motor**

3176550 1062011
FH V1 & V2, FH 2008-, FM V1 & V2, FM 2010-
R/H



Suffix Key; R = Reconditioned Part
OEM = Original Equipment Manufacturer ALT = Alternative Supplier Part
OE Numbers used for Cross Reference Purposes Only

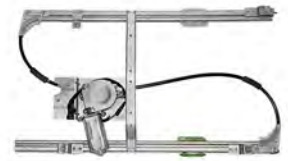


990007 **Window Mechanism**

82497193

New FL/FE

L/H, Electric Version · INCLUDES MOTOR



990006 **Window Mechanism**

82497194

New FL/FE

R/H, Electric Version · INCLUDES MOTOR



Suffix Key; R = Reconditioned Part

OEM = Original Equipment Manufacturer ALT = Alternative Supplier Part

OE Numbers used for Cross Reference Purposes Only



209515 **Condensing Radiator**

3962651
FH V1 Narrow Type



209216 **Condensing Radiator**

8144689
FH V1 Wide Type



209461OEM **Condensing Radiator**

21086309 20838905 20515134 3980841
FH V2 Wide Type
OEM Version



209461 **Condensing Radiator**

21086309 20838905 20515134 3980841
FH V2 Wide Type



209517OEM **Condensing Radiator**

21086304 20838903 20515136 3981637
FH V2, FH 2008-, FM V1 & V2, FM 2010-, FMX Narrow Type
OEM Version



Suffix Key; R = Reconditioned Part
OEM = Original Equipment Manufacturer ALT = Alternative Supplier Part
OE Numbers used for Cross Reference Purposes Only



209517 **Condensing Radiator**

21086304 20838903 20515136 3981637

FH V2, FH 2008-, FM V1 & V2, FM 2010-, FMX Narrow Type



209518 **Condensing Radiator**

21086300 20838901 20555299

FH V2, FH 2008- Wide Type



6290007OEM **Condensing Radiator**

23177268 22768926 22212982 22174081 21893823 21246033

FH V4

OEM Version



6290007 **Condensing Radiator**

23177268 22768926 22212982 22174081 21893823 21246033

FH V4



Suffix Key; R = Reconditioned Part

OEM = Original Equipment Manufacturer ALT = Alternative Supplier Part

OE Numbers used for Cross Reference Purposes Only



209527OEM **A/C Compressor**

3962650
FH V1
OEM Version



209527 **A/C Compressor**

3962650
FH V1



209526OEM **A/C Compressor**

21184142 20538307 8191892
FH V1 & V2, FM V1 & V2
OEM Version



209526 **A/C Compressor**

21184142 20538307 8191892
FH V1 & V2, FM V1 & V2



290029OEM **A/C Compressor**

20587125 85000458
FH13 2005-, FM11 2009-, FM13 2005-, FMX
OEM Version



Suffix Key; R = Reconditioned Part

OEM = Original Equipment Manufacturer ALT = Alternative Supplier Part

OE Numbers used for Cross Reference Purposes Only



290029 **A/C Compressor**

20587125 85000458
FH13 2005-, FM11 2009-, FM13 2005-, FMX



209521OEM **A/C Receiver Dryer**

20490947 8142079
FH V1 & V2, FH 2008-, FM V1 & V2, FM 2010-, FMX
OEM Version



209521 **A/C Receiver Dryer**

20490947 8142079
FH V1 & V2, FH 2008-, FM V1 & V2, FM 2010-, FMX



220087 **A/C Pressure Sensor**

20716737 20500692
FH V1 & V2, FH 2008-, FM V1 & V2, FM 2010-, FMX



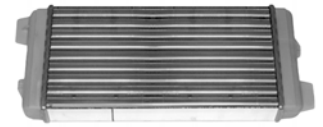
Suffix Key; R = Reconditioned Part

OEM = Original Equipment Manufacturer ALT = Alternative Supplier Part

OE Numbers used for Cross Reference Purposes Only



209211 **Heater Radiator**
1697358
FL6



209220OEM **Heater Radiator**
24425776 20532914 3090893
FH V1, FM V1
OEM Version



209220 **Heater Radiator**
24425776 20532914 3090893
FH V1, FM V1



202443 **O Ring**
20360330
FH V1 & V2, FH 2008-, FM V1 & V2, FM 2010-, FMX
for 209220



209543OEM **Heater Radiator**
85104947
FH V2, FH 2008-, FM V2, FM 2010-, FMX
OEM Version



Suffix Key; R = Reconditioned Part
OEM = Original Equipment Manufacturer ALT = Alternative Supplier Part
OE Numbers used for Cross Reference Purposes Only



209543 Heater Radiator

85104947
FH V2, FH 2008-, FM V2, FM 2010-, FMX



290241 Heater Radiator

21062377
FH 2005- FM 2005-



980009OEM Heater Motor Assembly

21396111
FE/FL
OEM Version



980009 Heater Motor Assembly

21396111
FE/FL



209573OEM Heater Motor

21629668 20936382 20443940 3090905
FH V1, FM V1
OEM Version



Suffix Key; R = Reconditioned Part
OEM = Original Equipment Manufacturer ALT = Alternative Supplier Part
OE Numbers used for Cross Reference Purposes Only



209573 Heater Motor

21629668 20936382 20443940 3090905

FH V1, FM V1



209592OEM Heater Motor

20926019 20443822

FH V2, FH 2008-, FM V2, FM 2010-, FMX

OEM Version



209592 Heater Motor

20926019 20443822

FH V2, FH 2008-, FM V2, FM 2010-, FMX



209574OEM Heater Motor Resistor Kit

20853484 20443824

FH V2, FH 2008-, FM V2, FM 2010-, FMX

for 209592OEM and 209592



290242OEM Heater Motor Resistor

20852837

FH V2, FH 2008- FM V2, FM 2010-, FMX

for 209592OEM and 209592



Suffix Key; R = Reconditioned Part

OEM = Original Equipment Manufacturer ALT = Alternative Supplier Part

OE Numbers used for Cross Reference Purposes Only



209456OEM **Heater Valve**

3093481
FH V1, FM V1
without Air Con



209457OEM **Heater Valve**

3093482
FH V1 & V2, FH 2008-, FM V1 & V2, FM 2010-, FMX
with Air Con



290104 **Heater Valve Kit**

20961407 20853254 20556770 85105605
FH V2
with Air Con



209616 **Heater Valve**

21248109 20774135
FH V2
with Air Con



202389 **Heater Hose**

3154396
FH V1 & V2, FM V1 & V2



Suffix Key; R = Reconditioned Part
OEM = Original Equipment Manufacturer ALT = Alternative Supplier Part
OE Numbers used for Cross Reference Purposes Only



202048 **Heater Hose**

20542204 3154395 1674305

FH V1 & V2, FM V1 & V2



220003 **Heater Hose**

20453670

FM V2, FM 2010-, FMX



Suffix Key; R = Reconditioned Part

OEM = Original Equipment Manufacturer ALT = Alternative Supplier Part

OE Numbers used for Cross Reference Purposes Only



209227 **Cab Air Filter**
6774452
FL6



209226 **Cab Air Filter**
21758906 8143691
FH V1 & V2, FH 2008-, FM V1 & V2, FM 2010-, FMX



290053 **Cab Air Filter**
20409908
FH V2, FH 2008-, FM V2, FM 2010-, FMX
Active Carbon Version



290062 **Cab Air Filter (Outer)**
82354791
FH V4



290246 **Cab Air Filter (Inner)**
82348995
FH V4 FMX V2



Suffix Key; R = Reconditioned Part
OEM = Original Equipment Manufacturer ALT = Alternative Supplier Part
OE Numbers used for Cross Reference Purposes Only



209298KIT **Cab Mount Bracket, Front - L/H**
 20442057 1075221
 FH V1
 Adaptor Kit



209298 **Cab Mount Bracket, Front - L/H**
 1075120 3944648
 FH V1
 Old Version



209299KIT **Cab Mount Bracket, Front - R/H**
 20442058 1075223
 FH V1
 Adaptor Kit



209299 **Cab Mount Bracket, Front - R/H**
 1075121 3944649
 FH V1
 Old Version



209360 **Cab Mount Repair Kit, Front**
 N/A
 FH V1
 Kit for both sides



Suffix Key; R = Reconditioned Part
 OEM = Original Equipment Manufacturer ALT = Alternative Supplier Part
OE Numbers used for Cross Reference Purposes Only



209300 Cab Mount Bush, Front

1629665
FH V1



290032 Cab Mount Bracket, Front - L/H

1076745
FH V2, FH 2008-, FM V1 & V2, FM 2010-, FMX
Later Version



290033 Cab Mount Bracket, Front - R/H

1076746
FH V2, FH 2008-, FM V1 & V2, FM 2010-, FMX
Later Version



Suffix Key; R = Reconditioned Part

OEM = Original Equipment Manufacturer ALT = Alternative Supplier Part

OE Numbers used for Cross Reference Purposes Only



209366 Cab Mounting Repair Kit

N/A
FH V1
Early Version



209369 Cab Mounting Bush

1075266
FH V1
Early Version



209508 Cab Mounting Repair Kit

N/A
FH V2, FH 2008-, FM V1 & V2, FM 2010-, FMX



209374 Cab Mounting Bush

20390840
FH V2, FH 2008-, FM V1 & V2, FM 2010-, FMX



290072 Cab Mounting Bush - Front

21271207 20581381
FE



Suffix Key; R = Reconditioned Part
OEM = Original Equipment Manufacturer ALT = Alternative Supplier Part
OE Numbers used for Cross Reference Purposes Only



209028 Cab Buffer - Front

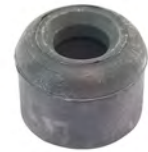
FH V1, FM V1



290106 Cab Buffer - Front

21333686 20453260

FH V2, FH 2008-, FM V2, FM 2010-, FMX



209571 Cab Level Valve - Front

20531965

FH V2, FH 2008-, FM V2, FM 2010-, FMX



209034 Cab Level Valve - Rear

20531967 3198233 8141934

FH V1 & V2, FH 2008-, FM V1 & V2, FM 2010-, FMX



Suffix Key; R = Reconditioned Part

OEM = Original Equipment Manufacturer ALT = Alternative Supplier Part

OE Numbers used for Cross Reference Purposes Only



209022 Cab Shock Absorber, Front
 1629722
 FH V1
 Hydraulic Shock



209565 Cab Shock Absorber, Front
 1075478
 FM V1
 Hydraulic Shock



209564 Cab Shock Absorber, Front
 21111925 3198836
 FH V2, FH 2008-, FM V2, FM 2010-, FMX
 Hydraulic Shock



209283 Cab Shock Absorber, Front
 FH V1
 Air Shock



209566 Cab Shock Absorber, Front
 21111932 20889132 20453256 3198837
 FH V2, FH 2008-
 Air Shock



Suffix Key; R = Reconditioned Part
 OEM = Original Equipment Manufacturer ALT = Alternative Supplier Part
OE Numbers used for Cross Reference Purposes Only



290083 Cab Shock Absorber, Front

21111942 20889136 20453258

FM V2, FM 2010-, FMX

Air Shock



290018 Cab Shock Bush Kit

N/A

FH V2, FH 2008-, FM V2, FM 2010-, FMX

for 209564



290254OEM Cab Shock Absorber - Front

21739591 21170510

FH V4 Must be changed in pairs



Suffix Key; R = Reconditioned Part

OEM = Original Equipment Manufacturer ALT = Alternative Supplier Part

OE Numbers used for Cross Reference Purposes Only



209023 **Cab Shock Absorber, Rear**
1629721
FH V1
Hydraulic Shock



209570 **Cab Shock Absorber, Rear**
1075445
FM V1
Hydraulic Shock



209455 **Cab Shock Absorber, Rear**
20721166 3172986 1076860
FH V2, FH 2008-, FM V1 & V2, FM 2010-, FMX
Hydraulic Shock



290019 **Cab Shock Absorber, Rear**
21376976 21137458 20960913 3198859
FH V2, FH 2008- FM V2, FM 2010-, FMX
Hydraulic Shock



209020 **Cab Shock Absorber, Rear**
1075077 1075076
FH V1
Air Shock



Suffix Key; R = Reconditioned Part
OEM = Original Equipment Manufacturer ALT = Alternative Supplier Part
OE Numbers used for Cross Reference Purposes Only

Direct Sourcing Solutions
Volvo Replacement Parts Catalogue 2020
Section 18; Cab & Body



209569 Cab Shock Absorber, Rear
22144200 21651231 20889134 20775212 20721169 20427897
FH V1 & V2, FH 2008-,
Air Shock



209567 Cab Shock Absorber, Rear
1075444
FM V1
Air Shock



209568 Cab Shock Absorber, Rear
21032337 20889138 20721167 3198850
FM V2, FM 2010-, FMX
Air Shock



290272OEM Cab Shock Absorber - Rear
22040665 21739593
FH V4 FMX
Hydraulic Shock



209024OEM Cab Shock Absorber, Rear - Diagonal
3986315 3198849 1622227
FH V1 & V2, FM V1 & V2
OEM Version



Suffix Key; R = Reconditioned Part
OEM = Original Equipment Manufacturer ALT = Alternative Supplier Part
OE Numbers used for Cross Reference Purposes Only



209024 Cab Shock Absorber, Rear - Diagonal

3986315 3198849 1622227

FH V1 & V2, FM V1 & V2



290052 Cab Shock Absorber, Rear - Diagonal

21168663

FH 2008-, FM 2010-, FMX



Suffix Key; R = Reconditioned Part

OEM = Original Equipment Manufacturer ALT = Alternative Supplier Part

OE Numbers used for Cross Reference Purposes Only



209045 Cab Tilt Ram
20452326 3944752 3944751 1075233 1622235
FH V1
All Cab Types inc Globetrotter



209516 Cab Tilt Ram
20922303 3198842
FH V2, FH 2008-
All Cab Types inc Globetrotter



209603 Cab Tilt Ram
20409130 1075457
FM V1



209602 Cab Tilt Ram
20922305 3198843
FM V2 FM V2, FM 2010-, FMX



6290001OEM Cab Tilt Ram
20722124
FE



Suffix Key; R = Reconditioned Part
OEM = Original Equipment Manufacturer ALT = Alternative Supplier Part
OE Numbers used for Cross Reference Purposes Only



209264 Cab Tilt Ram Gasket Kit
3090721
FH V1



290189 Cab Tilt Ram Bush / Pin Kit
3091796
FH V1 & V2, FH 2008-



209036 Cab Tilt Pump
1611186 3943330
FL7, FL10, FL12



209041OEM Cab Tilt Pump
1075295
FH V1, FM V1



209540OEM Cab Tilt Pump
20917278 20917265 20455259 3198844
FH V2, FH 2008-, FM V2, FM 2010-, FMX
Later Version With Adaptor Unions



Suffix Key; R = Reconditioned Part
OEM = Original Equipment Manufacturer ALT = Alternative Supplier Part
OE Numbers used for Cross Reference Purposes Only



290034OEM Cab Tilt Pump, Hyd/Electric

20917287 20453520

FH V1 & V2, FH 2008-, FM V1 & V2, FM 2010-, FMX

Later Version With Adaptor Unions



290263OEM Cab Tilt Pump

22841212 21882621 21241594

FH V4 FM V4



6290002OEM Cab Tilt Pump

82053296

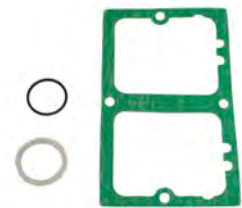
FE



209268 Cab Tilt Pump Repair Kit

3092051

FH V1



209662 Cab Tilt Pump Adaptor

85110122

FH V1 & V2, FH 2008-, FM V1 & V2, FM 2010-, FMX



Suffix Key; R = Reconditioned Part

OEM = Original Equipment Manufacturer ALT = Alternative Supplier Part

OE Numbers used for Cross Reference Purposes Only



290097 Cab Tilt Pipe
 85110482 3099867
 FH V2, FH 2008-, FM V2, FM 2010-, FMX
 Cab Pump to Ram - 1255mm



290135 Cab Tilt Pipe
 85110483
 FH 2008-, FM 2010-
 Cab Pump to Ram - 1270mm



290134 Cab Tilt Pipe
 85110485 3099869
 FH V2, FH 2008-, FM V2, FM 2010-, FMX
 Cab Pump to Ram - 31900mm



290035 Cab Tilt Pipe
 1076202 978886
 FH V1 & V2, FH 2008-, FM V1 & V2, FM 2010-, FMX
 To Cab Lock



290057 Cab Lock Warning Sensor
 20382529 8155724
 FH V1 & V2, FH 2008-, FM V1 & V2, FM 2010-



Suffix Key; R = Reconditioned Part
 OEM = Original Equipment Manufacturer ALT = Alternative Supplier Part
OE Numbers used for Cross Reference Purposes Only

Direct Sourcing Solutions
Volvo Replacement Parts Catalogue 2020
Section 18; Cab & Body



209581 **Mirror Assembly - L/H & R/H**
20862782
New FL/FE
Heated



209582 **Mirror Assembly - L/H & R/H**
20866655
New FL/FE
Heated / Electric Adjust



209583 **Mirror Glass - L/H & R/H**
20862795
New FL/FE
Heated



209584 **Mirror Cowl - L/H & R/H**
20882779
New FL/FE



990020 **Mirror Arm Cover - L/H**
20708110
New FL/FE



Suffix Key; R = Reconditioned Part
OEM = Original Equipment Manufacturer ALT = Alternative Supplier Part
OE Numbers used for Cross Reference Purposes Only



990021 **Mirror Arm Cover - R/H**
20708230
New FL/FE



209585 **Wide Angle Mirror Assembly - L/H**
20862809
New FL/FE
Heated



209586 **Wide Angle Mirror Assembly - R/H**
20862813
New FL/FE
Heated



209587 **Wide Angle Mirror Glass - L/H**
20862810
New FL/FE
Heated



209588 **Wide Angle Mirror Glass - R/H**
20862815
New FL/FE
Heated



Suffix Key; R = Reconditioned Part
OEM = Original Equipment Manufacturer ALT = Alternative Supplier Part
OE Numbers used for Cross Reference Purposes Only



209589 **Wide Angle Mirror Cowl - L/H & R/H**

20862800

New FL/FE



980013 **Air Temperature Sensor**

21311711 85111613

New FL/FE

For heated mirror



209613 **Front View Mirror c/w Arm**

82226025 20849837

New FL/FE



290013 **Front View Mirror**

N/A

New FL/FE



209590 **Roof Mirror**

20707814

New FL/FE



Suffix Key; R = Reconditioned Part

OEM = Original Equipment Manufacturer ALT = Alternative Supplier Part

OE Numbers used for Cross Reference Purposes Only



209152 **Mirror Housing - L/H**

3091258 3090766
FH V1, FM V1
GLASS NOT INCLUDED



209147 **Mirror Housing - R/H**

3091257
FH V1, FM V1
GLASS NOT INCLUDED



209161 **Mirror Glass, Heated**

20854564 3092854 3091756
FH V1, FM V1
Heated



209593 **Mirror Glass, Wide Angle**

21203311 20854568 3091757
FH V1, FM V1
300mm Radius



209556 **Mirror Arm - L/H**

FH V1, FM V1



Suffix Key; R = Reconditioned Part
OEM = Original Equipment Manufacturer ALT = Alternative Supplier Part
OE Numbers used for Cross Reference Purposes Only



209557 **Mirror Arm - R/H**

FH V1, FM V1



209579 **Roof Mirror - L/H & R/H**

21203313 20716739 84099794

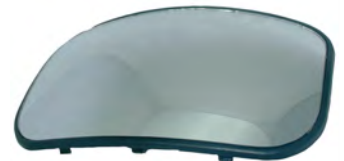
FH V1, FM V1



209580 **Roof Mirror Glass - L/H & R/H**

20716954

FH V1, FM V1



290006 **Front View Mirror c/w Arm**

21151135 20900683

FH V1, FM V1

RHD



290008 **Front View Mirror**

21020285 20716956

FH V1, FM V1



Suffix Key; R = Reconditioned Part

OEM = Original Equipment Manufacturer ALT = Alternative Supplier Part

OE Numbers used for Cross Reference Purposes Only

Direct Sourcing Solutions

Volvo Replacement Parts Catalogue 2020

Section 18; Cab & Body



209550 **Mirror Assembly - L/H**

N/A
FH V2, FH 2008-, FM V2, FM 2010-
RHD



209551 **Mirror Assembly - R/H**

N/A
FH V2, FH 2008-, FM V2, FM 2010-
RHD



290233 **Mirror Assembly - L/H**

22286160
FH V2, FH 2008- FM V2, FM 2010- Chassis width 2600
RHD



290234 **Mirror Assembly - R/H**

22286158
FH V2, FH 2008- FM V2, FM 2010- Chassis width 2600
RHD



209340 **Mirror Housing c/w Arms - L/H**

20567633 20455979
FH V2, FH 2008-, FM V2, FM 2010-
RHD



Suffix Key; R = Reconditioned Part
OEM = Original Equipment Manufacturer ALT = Alternative Supplier Part
OE Numbers used for Cross Reference Purposes Only



209341 Mirror Housing c/w Arms - R/H

20567635 20455980

FH V2, FH 2008-, FM V2, FM 2010-
RHD



209343 Mirror Insert - L/H

20455982

FH V2, FH 2008-, FM V2, FM 2010-
RHD



209342 Mirror Insert - R/H

20455981

FH V2, FH 2008-, FM V2, FM 2010-
RHD



209344 Mirror Cowl - L/H & R/H

20746401 20360810

FH V2, FH 2008-, FM V2, FM 2010-
RHD



209463 Mirror Swivel - L/H

20936169 20742488 20713892 20455989

FH V2, FH 2008-, FM V2, FM 2010-
inc Electrical Motor



Suffix Key; R = Reconditioned Part

OEM = Original Equipment Manufacturer ALT = Alternative Supplier Part

OE Numbers used for Cross Reference Purposes Only



209462 Mirror Swivel - R/H

20936170 20742489 20713895 20455988
FH V2, FH 2008-, FM V2, FM 2010-
inc Electrical Motor



209595 Mirror Glass - L/H & R/H

21320404 20589788
FH V2, FH 2008-, FM V2, FM 2010-
Heated



290010 Mirror Arm Repair Kit - L/H

21058485
FH V2, FH 2008-, FM V2, FM 2010-



290009 Mirror Arm Repair Kit - R/H

21059102
FH V2, FH 2008-, FM V2, FM 2010-



209606 Mirror Arm Cover - L/H

20455992
FH V2, FH 2008-, FM V2, FM 2010-



Suffix Key; R = Reconditioned Part
OEM = Original Equipment Manufacturer ALT = Alternative Supplier Part
OE Numbers used for Cross Reference Purposes Only



209607 Mirror Arm Cover - R/H

20455993

FH V2, FH 2008-, FM V2, FM 2010-



209596 Wide Angle Miror Assembly - L/H

21200816

FH V2, FH 2008-, FM V2, FM 2010-



209597 Wide Angle Miror Assembly - R/H

21200815

FH V2, FH 2008-, FM V2, FM 2010-



209599 Wide Angle Mirror Housing - L/H

20841078 20589819

FH V2, FH 2008-, FM V2, FM 2010-



209598 Wide Angle Mirror Housing - R/H

20841081 20589817

FH V2, FH 2008-, FM V2, FM 2010-



Suffix Key; R = Reconditioned Part
OEM = Original Equipment Manufacturer ALT = Alternative Supplier Part
OE Numbers used for Cross Reference Purposes Only



209349 Wide Angle Mirror Cowl - L/R & R/H

20360811
 FH V2, FH 2008-, FM V2, FM 2010-
 Up to June 2007



209576 Wide Angle Mirror Cowl - L/R & R/H

20841436
 FH V2, FH 2008-, FM V2, FM 2010-
 From June 2007



209337 Wide Angle Mirror Glass - L/H & R/H

20567685 20455995
 FH V2, FH 2008-, FM V2, FM 2010-
 Up to 2007



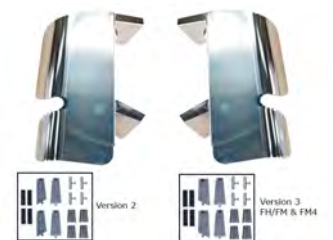
209575 Wide Angle Mirror Glass - L/H & R/H

21070768
 FH V2, FH 2008-, FM V2, FM 2010-
 From June 2007



290162 Mirror Guard Kit

N/A
 FH V2, FH 2008-, FM V2, FM 2010-



Suffix Key; R = Reconditioned Part
 OEM = Original Equipment Manufacturer ALT = Alternative Supplier Part
OE Numbers used for Cross Reference Purposes Only



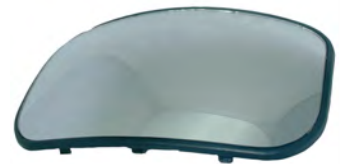
209579 Roof Mirror - L/H & R/H

21203313 20716739 84099794
FH V2, FH 2008-, FM V2, FM 2010-



209580 Roof Mirror Glass - L/H & R/H

20716954
FH V2, FH 2008-, FM V2, FM 2010-



290007 Front View Mirror c/w Arm

21150636 20900680 20716744
FH V2, FH 2008-, FM V2, FM 2010-



290008 Front View Mirror

21020285 20716956
FH V2, FH 2008-, FM V2, FM 2010-



Suffix Key; R = Reconditioned Part

OEM = Original Equipment Manufacturer ALT = Alternative Supplier Part

OE Numbers used for Cross Reference Purposes Only



290125OEM **Mirror Assembly - L/H**

N/A
FH V4



290126OEM **Mirror Assembly - R/H**

N/A
FH V4



290142OEM **Mirror Arm - L/H**

82356797
FH V4



290141OEM **Mirror Arm - R/H**

82359208
FH V4



290264OEM **Mirror Actuator - L/H & R/H**

21654870
FH V4



Suffix Key; R = Reconditioned Part

OEM = Original Equipment Manufacturer ALT = Alternative Supplier Part

OE Numbers used for Cross Reference Purposes Only

Direct Sourcing Solutions
Volvo Replacement Parts Catalogue 2020
Section 18; Cab & Body



290144OEM **Mirror Glass - L/H**
82356810
FH V4



290143OEM **Mirror Glass - R/H**
82359214
FH V4



290149OEM **Main Mirror Housing - L/H**
82356808
FH V4



290148OEM **Main Mirror Housing - R/H**
82359213
FH V4



290147OEM **Mirror Arm Upper Cover - L/H**
82268522
FH V4



Suffix Key; R = Reconditioned Part
OEM = Original Equipment Manufacturer ALT = Alternative Supplier Part
OE Numbers used for Cross Reference Purposes Only



290146OEM **Mirror Arm Upper Cover - R/H**

82268525

FH V4



290155OEM **Mirror Arm Cover - Lower - RH**

82268553

FH V4



290156OEM **Mirror Arm Cover - Lower - LH**

82268542

FH V4



290145OEM **W/Angle Mirror Glass - L/H & R/H**

82356824

FH V4



290150OEM **W/Angle Mirror Housing - L/H & R/H**

82356819

FH V4



Suffix Key; R = Reconditioned Part
OEM = Original Equipment Manufacturer ALT = Alternative Supplier Part
OE Numbers used for Cross Reference Purposes Only



290140 **Mirror Guard Kit**

N/A
FH V4
Stainless Steel



290157OEM **Roof Mirror - L/H & R/H**

84167321 84004929
FH V4



290158 **Front View Mirror**

84004927
FH V4



Suffix Key; R = Reconditioned Part

OEM = Original Equipment Manufacturer ALT = Alternative Supplier Part

OE Numbers used for Cross Reference Purposes Only



290171 Mirror Assembly - L/H & R/H

N/A
 FMX V1
 Non Heated



290172 Mirror Assembly - L/H & R/H

N/A
 FMX V1
 Heated



290173 Mirror Assembly - L/H & R/H

N/A
 FMX V1
 Heated / Electric Adjust



290208 Mirror Arm - L/H

82417283
 FMX V1



290209 Mirror Arm - R/H

82417284
 FMX V1



Suffix Key; R = Reconditioned Part
 OEM = Original Equipment Manufacturer ALT = Alternative Supplier Part
OE Numbers used for Cross Reference Purposes Only



290176 **Mirror Glass - L/H & R/H**

N/A
FMX V1
Non Heated



290107 **Mirror Glass - L/H & R/H**

82417041
FMX V1
Heated



290178 **W/Angle Miror Assembly - L/H & R/H**

N/A
FMX V1
Non Heated



290179 **W/Angle Miror Assembly - L/H & R/H**

N/A
FMX V1
Heated



290181 **W/Angle Mirror Glass - L/H & R/H**

N/A
FMX V1
Non Heated



Suffix Key; R = Reconditioned Part
OEM = Original Equipment Manufacturer ALT = Alternative Supplier Part
OE Numbers used for Cross Reference Purposes Only



290182 **W/Angle Mirror Glass - L/H & R/H**
82417044
FMX V1
Heated



290231 **Mirror Guard Set**
N/A
FMX V1



Suffix Key; R = Reconditioned Part

OEM = Original Equipment Manufacturer ALT = Alternative Supplier Part

OE Numbers used for Cross Reference Purposes Only



290174 Mirror Assembly - L/H & R/H

N/A
 FMX V2
 Heated



290175 Mirror Assembly - L/H & R/H

N/A
 FMX V2
 Heated / Electric Adjust



290240 Mirror Housing - L/H & R/H

N/A
 FMX V2



290177 Mirror Frame - L/H & R/H

82417042
 FMX V2



290107 Mirror Glass - L/H & R/H

82417041
 FMX V2
 Heated



Suffix Key; R = Reconditioned Part
 OEM = Original Equipment Manufacturer ALT = Alternative Supplier Part
OE Numbers used for Cross Reference Purposes Only



290180 **W/Angle Mirror Assembly - L/H & R/H**
 N/A
 FMX V2
 Heated / Electric Adjust



290210 **W/Angle Mirror Housing - L/H & R/H**
 82471689
 FMX V2



290183 **W/Angle Mirror Frame - L/H & R/H**
 82417045
 FMX V2



290182 **W/Angle Mirror Glass - L/H & R/H**
 82417044
 FMX V2
 Heated



290231 **Mirror Guard Set**
 N/A
 FMX V2



Suffix Key; R = Reconditioned Part
 OEM = Original Equipment Manufacturer ALT = Alternative Supplier Part
OE Numbers used for Cross Reference Purposes Only



290063 Sun Visor

20937442 20743944

New FE
Narrow Cab



6290004 Sun Visor

20937446 20937418

New FE
Wide Cab



290258 Sun Visor

20937431 20501225

New FL



209237SMOKED Sun Visor - No Lamp Holes

8189318

FH V1, FM V1

Smoked Colour



209238SMOKED Sunvisor - 2 Lamp Holes

8189310 1619092

FH V1, FM V1

Smoked Colour



Suffix Key; R = Reconditioned Part

OEM = Original Equipment Manufacturer ALT = Alternative Supplier Part

OE Numbers used for Cross Reference Purposes Only



209239SMOKED Sunvisor - 5 Lamp Holes

8189314 1619093

FH V1, FM V1

Smoked Colour



209274 Sun Visor Fitting Kit

3963592

FH V1, FM V1

Normal Cab



209275 Sun Visor Fitting Kit

3963593

FH V1, FM V1

Globetrotter Cab



209554 Sun Visor, Top Section

20456710 20527443 20527445 20572459

FH V2, FM V2



209465 Sun Visor, Lower Section

20456709

FH V2, FM V2



Suffix Key; R = Reconditioned Part

OEM = Original Equipment Manufacturer ALT = Alternative Supplier Part

OE Numbers used for Cross Reference Purposes Only



209555 Sun Visor Fitting Kit

21102570

FH V2, FM V2

Globetrotter Cab



290058 Sun Visor Fitting Clip

20530245

FH V2, FM V2

Not included in above kit



290055 Sun Visor Upper Mounting Bracket

20846426 20467003

FH V2, FM V2

Normal Cab



290054 Sun Visor

82245535 82376974 82461699 82921563

FH 2008-, FM 2010-, FMX



290212 Sun Visor Fitting Kit

21564551

FH 2008-, FM 2010-, FMX

For Low Cab



Suffix Key; R = Reconditioned Part
 OEM = Original Equipment Manufacturer ALT = Alternative Supplier Part
OE Numbers used for Cross Reference Purposes Only



290213 Sun Visor Fitting Kit

21564554
FH 2008-, FM 2010-, FMX
For High Cab



290102 Sunvisor Moulding

21249472
FH 2008-, FM 2010-, FMX



290103 Sunvisor Cover

82144656
FH 2008-, FM 2010-, FMX



290130 Sun Visor

84014254 82131055
FH V4



290118 Sunvisor Moulding

21443695 21443604
FH V4



Suffix Key; R = Reconditioned Part
OEM = Original Equipment Manufacturer ALT = Alternative Supplier Part
OE Numbers used for Cross Reference Purposes Only



290203 **Sun Visor Fitting Kit**
21596684
FH V4
with 175 Cab



290204 **Sun Visor Fitting Kit**
21596685
FH V4
with 215 Cab



Suffix Key; R = Reconditioned Part

OEM = Original Equipment Manufacturer ALT = Alternative Supplier Part

OE Numbers used for Cross Reference Purposes Only



290039 **Bumper**
20961733 20961676 20879779 20855642
New FL



290108 **Bumper Corner - L/H**
20977735 20742651
New FL



290109 **Bumper Corner - R/H**
20977734 20742652
New FL



290110 **Fog Lamp Bezel - L/H**
20742667
New FL



290111 **Fog Lamp Bezel - R/H**
20742668
New FL



Suffix Key; R = Reconditioned Part
OEM = Original Equipment Manufacturer ALT = Alternative Supplier Part
OE Numbers used for Cross Reference Purposes Only



290112 **Bumper Grill - Rear**

21036548 20742469

New FL



290113 **Bumper Grill - Front**

20742470

New FL



290114 **Bumper Foot Plate - Short**

20742463

New FL



290115 **Bumper Foot Plate - Long**

20742466

New FL



290116 **Bumper Support Bracket - L/H**

20766124

New FL



Suffix Key; R = Reconditioned Part

OEM = Original Equipment Manufacturer ALT = Alternative Supplier Part

OE Numbers used for Cross Reference Purposes Only



290117 **Bumper Support Bracket - R/H**

20766125
New FL



609069 **Foot Step Panel - L/H**

20538006
New FL
Single Step Type



609068 **Foot Step Panel - R/H**

20538003
New FL
Single Step Type



690102 **Foot Step Panel - L/H**

21032149 20571894
New FL
Double Step Type



690103 **Foot Step Panel - R/H**

21032150 20571895
New FL
Double Step Type



Suffix Key; R = Reconditioned Part

OEM = Original Equipment Manufacturer ALT = Alternative Supplier Part

OE Numbers used for Cross Reference Purposes Only



609009

Step - L/H

20538012

New FL
Plastic



609008

Step - R/H

20538011

New FL
Plastic



690004

Step - L/H & R/H

N/A

New FL
Aluminium



Suffix Key; R = Reconditioned Part

OEM = Original Equipment Manufacturer ALT = Alternative Supplier Part

OE Numbers used for Cross Reference Purposes Only



290064 **Bumper Spoiler - L/H**

25369342
FE



290065 **Bumper Spoiler - R/H**

25369343
FE



290066 **Bumper Spoiler - Centre Section**

25369341
FE



609185 **Bumper Support Bracket - L/H**

20819616
FE



609184 **Bumper Support Bracket - R/H**

20819613
FE



Suffix Key; R = Reconditioned Part
OEM = Original Equipment Manufacturer ALT = Alternative Supplier Part
OE Numbers used for Cross Reference Purposes Only



290030 **Foot Step Panel - L/H**
20593721
FE
Grey



290031 **Foot Step Panel - R/H**
20593735
FE
Grey



290067 **Foot Step Inner Panel - L/H**
20593729
FE



290068 **Foot Step Inner Panel - R/H**
20593731
FE



290069 **Upper Step - L/H**
20538247
FE
Plastic



Suffix Key; R = Reconditioned Part
OEM = Original Equipment Manufacturer ALT = Alternative Supplier Part
OE Numbers used for Cross Reference Purposes Only



290070 **Upper Step - R/H**
20538248
FE
Plastic



690037 **Upper Step - L/H & R/H**
N/A
FE
Aluminium



609009 **Lower Step - L/H**
20538012
FE
Plastic



609008 **Lower Step - R/H**
20538011
FE
Plastic



690004 **Lower Step - L/H & R/H**
N/A
FE
Aluminium



Suffix Key; R = Reconditioned Part
OEM = Original Equipment Manufacturer ALT = Alternative Supplier Part
OE Numbers used for Cross Reference Purposes Only

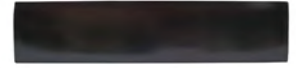


209063

Front Panel

8191220

FH V1



209050

Front Panel Gas Strut

1619106

FH V1



209097

Upper Grill

20360507 8144455

FH V1



209318

Upper Grill Trim Kit

8144527 8144526 8144525 8144524

FH V1



209096

Lower Grill

1063509 8144482

FH V1



Suffix Key; R = Reconditioned Part

OEM = Original Equipment Manufacturer ALT = Alternative Supplier Part

OE Numbers used for Cross Reference Purposes Only



209061 **Corner Panel - L/H**
1619148 8189092
FH V1



209062 **Corner Panel - R/H**
1619149 8189093
FH V1



209008 **Headlamp Panel - L/H**
20398385 1062547 3980869
FH V1



209009 **Headlamp Panel - R/H**
20398386 1062548 3980870
FH V1



208145 **Headlamp Panel Rear Cover - L/H**
8141289
FH V1



Suffix Key; R = Reconditioned Part
OEM = Original Equipment Manufacturer ALT = Alternative Supplier Part
OE Numbers used for Cross Reference Purposes Only



208146 **Headlamp Panel Rear Cover - R/H**

8141290
FH V1



209001 **Headlamp Bracket - L/H**

8191401
FH V1



209002 **Headlamp Bracket - R/H**

8191402
FH V1



209205 **Bumper**

8189329
FH V1



209375 **Bumper Step - L/H**

20372226 1626679
FH V1



Suffix Key; R = Reconditioned Part
OEM = Original Equipment Manufacturer ALT = Alternative Supplier Part
OE Numbers used for Cross Reference Purposes Only



209376 Bumper Step - R/H

20372227 1626680
FH V1



209724 Bumper Blank Plates

20360776
FH V1



209720 Tow Brace

1629389
FH V1



290211 Towing Pin

1629391
FH V1



209240 Bumper Spoiler

8152722
FH V1



Suffix Key; R = Reconditioned Part
OEM = Original Equipment Manufacturer ALT = Alternative Supplier Part
OE Numbers used for Cross Reference Purposes Only

Direct Sourcing Solutions
Volvo Replacement Parts Catalogue 2020
Section 18; Cab & Body



209675 **Front Step**

3175863 8189467
FH V1



209116 **Side Wing Extension - L/H**

8141236
FH V1



209117 **Side Wing Extension - R/H**

8141237
FH V1



209078 **Step Panel - L/H**

3175246 8189195 8144107
FH V1



209079 **Step Panel - R/H**

3175257 8189196 8144108
FH V1



Suffix Key; R = Reconditioned Part
OEM = Original Equipment Manufacturer ALT = Alternative Supplier Part
OE Numbers used for Cross Reference Purposes Only



209351 **Step Panel Access Door**

20529765 3981043
FH V1



209082 **Lower Step Housing - L/H**

8141312
FH V1



209083 **Lower Step Housing - R/H**

8141313
FH V1



209070 **Top Step - L/H & R/H**

20379439 8191315 8191105
FH V1



209069 **Middle Step - L/H & R/H**

20379438 8191314 8191104
FH V1



Suffix Key; R = Reconditioned Part
OEM = Original Equipment Manufacturer ALT = Alternative Supplier Part
OE Numbers used for Cross Reference Purposes Only



209071 Lower Step - L/H & R/H

20379437 8191313 8191103

FH V1



209674 Front Drop Wing - L/H

8156540

FH V1



209113 Front Drop Wing - R/H

1623459

FH V1



Suffix Key; R = Reconditioned Part

OEM = Original Equipment Manufacturer ALT = Alternative Supplier Part

OE Numbers used for Cross Reference Purposes Only



209301

Main Grill

8191421

FM V1

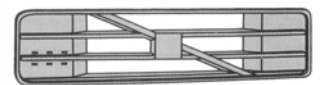


209359

Main Grill Insert

8191406

FM V1



209511

Main Grill Hinge - L/H

1062712

FM V1



209512

Main Grill Hinge - R/H

1062713

FM V1



209611

Main Grill Gas Strut

8191439

FM V1



Suffix Key; R = Reconditioned Part

OEM = Original Equipment Manufacturer ALT = Alternative Supplier Part

OE Numbers used for Cross Reference Purposes Only



209096 **Lower Grill**
1063509 8144482
FM V1



209304 **Corner Panel - L/H**
8191409
FM V1



209305 **Corner Panel - R/H**
8191412
FM V1



209302 **Headlamp Panel - L/H**
20398387 8191561
FM V1



209303 **Headlamp Panel - R/H**
20398388 8191562
FM V1



Suffix Key; R = Reconditioned Part
OEM = Original Equipment Manufacturer ALT = Alternative Supplier Part
OE Numbers used for Cross Reference Purposes Only



208145 **Headlamp Panel Rear Cover - L/H**

8141289
FM V1



208146 **Headlamp Panel Rear Cover - R/H**

8141290
FM V1



209001 **Headlamp Bracket - L/H**

8191401
FM V1



209002 **Headlamp Bracket - R/H**

8191402
FM V1



209205 **Bumper**

8189329
FM V1



Suffix Key; R = Reconditioned Part
OEM = Original Equipment Manufacturer ALT = Alternative Supplier Part
OE Numbers used for Cross Reference Purposes Only



209375 Bumper Step - L/H

20372226 1626679
FM V1



209376 Bumper Step - R/H

20372227 1626680
FM V1



209724 Bumper Blank Plates

20360776
FM V1



209720 Tow Brace

1629389
FM V1



290211 Towing Pin

1629391
FM V1



Suffix Key; R = Reconditioned Part
OEM = Original Equipment Manufacturer ALT = Alternative Supplier Part
OE Numbers used for Cross Reference Purposes Only



209240 Bumper Spoiler

8152722
FM V1



209675 Front Step

3175863 8189467
FM V1



209354 Lower Step Housing - L/H

8191593 1062133
FM V1



209355 Lower Step Housing - R/H

8191594 1062134
FM V1



209358 Top Step

1063726
FM V1



Suffix Key; R = Reconditioned Part
OEM = Original Equipment Manufacturer ALT = Alternative Supplier Part
OE Numbers used for Cross Reference Purposes Only



209356 Lower Step - L/H

8191826
FM V1



209357 Lower Step - R/H

8191827
FM V1



290136 Top Step Bracket - L/H

20502235
FM V1



290137 Top Step Bracket - R/H

20502239
FM V1



290138 Step Panel Bracket - L/H

20489289 3981488
FM V1



Suffix Key; R = Reconditioned Part
OEM = Original Equipment Manufacturer ALT = Alternative Supplier Part
OE Numbers used for Cross Reference Purposes Only



290139 **Step Panel Bracket - R/H**

3981489
FM V1



209486 **Wing - L/H**

8191780
FM V1



209487 **Wing - R/H**

8191781
FM V1



209396 **Front Drop Wing - L/H & R/H**

1063735
FM V1



Suffix Key; R = Reconditioned Part
OEM = Original Equipment Manufacturer ALT = Alternative Supplier Part
OE Numbers used for Cross Reference Purposes Only



209572 **Main Grill**

20398253 20360266
FH V2



209731 **Main Grill Hinge - L/H**

82215391 20467142 3175377
FH V2



209732 **Main Grill Hinge - R/H**

82215401 20467143 20379341
FH V2



209469 **Main Grill Handle - L/H**

20529738 20383545
FH V2



209470 **Main Grill Handle - R/H**

20530146 3175367
FH V2



Suffix Key; R = Reconditioned Part
OEM = Original Equipment Manufacturer ALT = Alternative Supplier Part
OE Numbers used for Cross Reference Purposes Only



209471 **Main Grill Handle Cover - L/H & R/H**
3175366
FH V2



209601 **Main Grill Gas Strut**
20379348
FH V2



209382 **Lower Grill**
21430596 20516776 20453716
FH V2



209385 **Lower Grill Cover - Upper L/H**
20529705 3175545
FH V2
L/H Upper



209386 **Lower Grill Cover - Upper R/H**
20529706 3175546
FH V2
R/H Upper



Suffix Key; R = Reconditioned Part
OEM = Original Equipment Manufacturer ALT = Alternative Supplier Part
OE Numbers used for Cross Reference Purposes Only



209387 **Lower Grill Cover - Lower L/H**
20529707 3175547
FH V2
L/H Lower



209388 **Lower Grill Cover - Lower R/H**
20529708 3175548
FH V2
R/H Lower



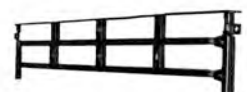
209638 **Lower Grill Blank Cover**
21425186 20453960
FH V2



209383 **Lower Grill Insert - Outer**
20529704 20409818
FH V2
Plastic



209384 **Lower Grill Insert - Inner**
20533138 20456963 20425396 20372108
FH V2
Steel



Suffix Key; R = Reconditioned Part
OEM = Original Equipment Manufacturer ALT = Alternative Supplier Part
OE Numbers used for Cross Reference Purposes Only



209641 Lower Grill Hinge - L/H

20545094
FH V2



209640 Lower Grill Hinge - R/H

20545095
FH V2



209643 Lower Grill Lock - L/H

82060441
FH V2



209644 Lower Grill Lock - R/H

82060445
FH V2



209444 Corner Panel - L/H

20379175
FH V2



Suffix Key; R = Reconditioned Part
OEM = Original Equipment Manufacturer ALT = Alternative Supplier Part
OE Numbers used for Cross Reference Purposes Only



209445

Corner Panel - R/H

20379176

FH V2



209538

Corner Panel Garnish - L/H

20529672 20379358

FH V2



209539

Corner Panel Garnish - R/H

20529668 20379357

FH V2



209410

Headlamp Panel - L/H

20917957 20827042 20534600 20453627

FH V2



209411

Headlamp Panel - R/H

20917958 20827044 20534601 20453628

FH V2



Suffix Key; R = Reconditioned Part

OEM = Original Equipment Manufacturer ALT = Alternative Supplier Part

OE Numbers used for Cross Reference Purposes Only



209408 **Headlamp Panel Rear Cover - L/H**

21359257 20507020 20453930

FH V2



209409 **Headlamp Panel Rear Cover - R/H**

21359260 20507020 20453931

FH V2



209380 **Headlamp Surround - L/H**

21469918 20452886

FH V2



209381 **Headlamp Surround - R/H**

21469924 20452887

FH V2



209509 **Headlamp Frame - L/H**

20452847

FH V2



Suffix Key; R = Reconditioned Part
OEM = Original Equipment Manufacturer ALT = Alternative Supplier Part
OE Numbers used for Cross Reference Purposes Only



209510 **Headlamp Frame - R/H**

20452848
FH V2



209628 **Bumper Support Bracket**

21484901 20467442 20456550
FH V2



209377 **Bumper Section - Steel - Centre**

20398709
FH V2



209378 **Bumper Section - Steel - L/H**

20398707
FH V2



209379 **Bumper Section - Steel - R/H**

20398708
FH V2



Suffix Key; R = Reconditioned Part

OEM = Original Equipment Manufacturer ALT = Alternative Supplier Part

OE Numbers used for Cross Reference Purposes Only



209473 Bumper End Cap - L/H

21359176 20453678 20453676

FH V2



209474 Bumper End Cap - R/H

21359192 20453679 20453677

FH V2



209405 Bumper Section - Plastic - Centre

20529740 3175417

FH V2

Black Finished Version



209406 Bumper Section - Plastic - L/H

20529741 3175418

FH V2

Black Finished Version



209407 Bumper Section - Plastic - L/H

20529742 3175419

FH V2

Black Finished Version



Suffix Key; R = Reconditioned Part

OEM = Original Equipment Manufacturer ALT = Alternative Supplier Part

OE Numbers used for Cross Reference Purposes Only



209440 **Bumper Section - Plastic - Centre**

21359080 20452625
FH V2
Grey Unfinished Version



209441 **Bumper Section - Plastic - L/H**

21359082 20452626
FH V2
Grey Unfinished Version



209442 **Bumper Section - Plastic - L/H**

21359090 20452627
FH V2
Grey Unfinished Version



209720 **Tow Brace**

1629389
FH V2



290211 **Towing Pin**

1629391
FH V2



Suffix Key; R = Reconditioned Part
OEM = Original Equipment Manufacturer ALT = Alternative Supplier Part
OE Numbers used for Cross Reference Purposes Only



209619 **Lower Bumper Spoiler - Centre Section**

21430599 20456804
FH V2



209620 **Lower Bumper Spoiler - L/H Section**

21430600 20456805
FH V2



209621 **Lower Bumper Spoiler - R/H Section**

21430672 20456806
FH V2



209433 **Side Wing Extension - L/H**

3175929
FH V2



209434 **Side Wing Extension - R/H**

3175930
FH V2



Suffix Key; R = Reconditioned Part
OEM = Original Equipment Manufacturer ALT = Alternative Supplier Part
OE Numbers used for Cross Reference Purposes Only



209431 **Step Panel - L/H**

3175927
FH V2



209432 **Step Panel - R/H**

3175928
FH V2



209351 **Step Panel Access Door**

20529765 3981043
FH V2



209403 **Lower Step Housing - L/H**

20529638 3175406
FH V2



209404 **Lower Step Housing - R/H**

20529640 3175407
FH V2



Suffix Key; R = Reconditioned Part

OEM = Original Equipment Manufacturer ALT = Alternative Supplier Part

OE Numbers used for Cross Reference Purposes Only



209070 **Top Step - L/H & R/H**

20379439 8191315 8191105

FH V2



209412 **Middle / Lower Step - L/H**

20360788

FH V2



209413 **Middle / Lower Step - R/H**

20360789

FH V2



209435 **Wing - L/H**

20372064

FH V2

Front of Front Axle



209436 **Wing - R/H**

20372065

FH V2

Front of Front Axle



Suffix Key; R = Reconditioned Part

OEM = Original Equipment Manufacturer ALT = Alternative Supplier Part

OE Numbers used for Cross Reference Purposes Only



209437 **Wing Trim - L/H**

20529682 3175933
FH V2



209438 **Wing Trim - R/H**

20529684 3175934
FH V2



209536 **Wing Widener - L/H**

20529685 3175937
FH V2



209537 **Wing Widener - R/H**

20529686 3175938
FH V2



209439 **Front Drop Wing - L/H & R/H**

20453900
FH V2



Suffix Key; R = Reconditioned Part

OEM = Original Equipment Manufacturer ALT = Alternative Supplier Part

OE Numbers used for Cross Reference Purposes Only



290243 **Front Drop Wing Bracket - L/H**

20535535 20493931

FH V2



290244 **Front Drop Wing Bracket - R/H**

20535537 20493933

FH V2



Suffix Key; R = Reconditioned Part

OEM = Original Equipment Manufacturer ALT = Alternative Supplier Part

OE Numbers used for Cross Reference Purposes Only



209400 **Main Grill**

20523237 3175376
FM V2



290027 **Main Grill Hinge - L/H**

82402327 20476396
FM V2



290028 **Main Grill Hinge - R/H**

82402332 20476392
FM V2



209469 **Main Grill Handle - L/H**

20529738 20383545
FM V2



209470 **Main Grill Handle - R/H**

20530146 3175367
FM V2



Suffix Key; R = Reconditioned Part

OEM = Original Equipment Manufacturer ALT = Alternative Supplier Part

OE Numbers used for Cross Reference Purposes Only



209471 **Main Grill Handle Cover - L/H & R/H**
3175366
FM V2



209612 **Main Grill Gas Strut**
20379349
FM V2



209382 **Lower Grill**
21430596 20516776 20453716
FM V2



209385 **Lower Grill Cover - Upper L/H**
20529705 3175545
FM V2
L/H Upper



209386 **Lower Grill Cover - Upper R/H**
20529706 3175546
FM V2
R/H Upper



Suffix Key; R = Reconditioned Part
OEM = Original Equipment Manufacturer ALT = Alternative Supplier Part
OE Numbers used for Cross Reference Purposes Only



209387 **Lower Grill Cover - Lower L/H**
20529707 3175547
FM V2
L/H Lower



209388 **Lower Grill Cover - Lower R/H**
20529708 3175548
FM V2
R/H Lower



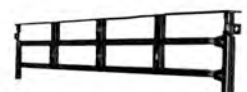
209638 **Lower Grill Blank Cover**
21425186 20453960
FM V2



209383 **Lower Grill Insert - Outer**
20529704 20409818
FM V2
Plastic



209384 **Lower Grill Insert - Inner**
20533138 20456963 20425396 20372108
FM V2
Steel



Suffix Key; R = Reconditioned Part
OEM = Original Equipment Manufacturer ALT = Alternative Supplier Part
OE Numbers used for Cross Reference Purposes Only



209641 Lower Grill Hinge - L/H

20545094
FM V2



209640 Lower Grill Hinge - R/H

20545095
FM V2



209643 Lower Grill Lock - L/H

82060441
FM V2



209644 Lower Grill Lock - R/H

82060445
FM V2



209401 Corner Panel - L/H

20379171
FM V2



Suffix Key; R = Reconditioned Part
OEM = Original Equipment Manufacturer ALT = Alternative Supplier Part
OE Numbers used for Cross Reference Purposes Only



209402

Corner Panel - R/H

20379172

FM V2



209538

Corner Panel Garnish - L/H

20529672 20379358

FM V2



209539

Corner Panel Garnish - R/H

20529668 20379357

FM V2



209410

Headlamp Panel - L/H

20917957 20827042 20534600 20453627

FM V2



209411

Headlamp Panel - R/H

20917958 20827044 20534601 20453628

FM V2



Suffix Key; R = Reconditioned Part

OEM = Original Equipment Manufacturer ALT = Alternative Supplier Part

OE Numbers used for Cross Reference Purposes Only



209408 **Headlamp Panel Rear Cover - L/H**

21359257 20507020 20453930
FM V2



209409 **Headlamp Panel Rear Cover - R/H**

21359260 20507020 20453931
FM V2



209380 **Headlamp Surround - L/H**

21469918 20452886
FM V2



209381 **Headlamp Surround - R/H**

21469924 20452887
FM V2



209509 **Headlamp Frame - L/H**

20452847
FM V2



Suffix Key; R = Reconditioned Part
OEM = Original Equipment Manufacturer ALT = Alternative Supplier Part
OE Numbers used for Cross Reference Purposes Only



209510 **Headlamp Frame - R/H**

20452848
FM V2



209628 **Bumper Support Bracket**

21484901 20467442 20456550
FM V2



209377 **Bumper Section - Steel - Centre**

20398709
FM V2



209378 **Bumper Section - Steel - L/H**

20398707
FM V2



209379 **Bumper Section - Steel - R/H**

20398708
FM V2



Suffix Key; R = Reconditioned Part
OEM = Original Equipment Manufacturer ALT = Alternative Supplier Part
OE Numbers used for Cross Reference Purposes Only



209473 Bumper End Cap - L/H

21359176 20453678 20453676

FM V2



209474 Bumper End Cap - R/H

21359192 20453679 20453677

FM V2



209405 Bumper Section - Plastic - Centre

20529740 3175417

FM V2

Black Finished Version



209406 Bumper Section - Plastic - L/H

20529741 3175418

FM V2

Black Finished Version



209407 Bumper Section - Plastic - L/H

20529742 3175419

FM V2

Black Finished Version



Suffix Key; R = Reconditioned Part

OEM = Original Equipment Manufacturer ALT = Alternative Supplier Part

OE Numbers used for Cross Reference Purposes Only



209440 **Bumper Section - Plastic - Centre**

21359080 20452625
FM V2
Grey Unfinished Version



209441 **Bumper Section - Plastic - L/H**

21359082 20452626
FM V2
Grey Unfinished Version



209442 **Bumper Section - Plastic - L/H**

21359090 20452627
FM V2
Grey Unfinished Version



209720 **Tow Brace**

1629389
FM V2



290211 **Towing Pin**

1629391
FM V2



Suffix Key; R = Reconditioned Part
OEM = Original Equipment Manufacturer ALT = Alternative Supplier Part
OE Numbers used for Cross Reference Purposes Only



209619 Lower Bumper Spoiler - Centre Section

21430599 20456804
FM V2



209620 Lower Bumper Spoiler - L/H Section

21430600 20456805
FM V2



209621 Lower Bumper Spoiler - R/H Section

21430672 20456806
FM V2



209492 Step Panel - L/H

20537185 20425469 3175158
FM V2



209493 Step Panel - R/H

20529483 3175159
FM V2



Suffix Key; R = Reconditioned Part
OEM = Original Equipment Manufacturer ALT = Alternative Supplier Part
OE Numbers used for Cross Reference Purposes Only



209351 **Step Panel Access Door**

20529765 3981043
FM V2



209403 **Lower Step Housing - L/H**

20529638 3175406
FM V2



209404 **Lower Step Housing - R/H**

20529640 3175407
FM V2



209358 **Top Step - L/H & R/H**

1063726
FM V2



209412 **Lower Step - L/H**

20360788
FM V2



Suffix Key; R = Reconditioned Part
OEM = Original Equipment Manufacturer ALT = Alternative Supplier Part
OE Numbers used for Cross Reference Purposes Only



209413

20360789

FM V2

Lower Step - R/H



290136

20502235

FM V2

Top Step Bracket - L/H



290137

20502239

FM V2

Top Step Bracket - R/H



290138

20489289 3981488

FM V2

Step Panel Bracket - L/H



290139

3981489

FM V2

Step Panel Bracket - R/H



Suffix Key; R = Reconditioned Part
OEM = Original Equipment Manufacturer ALT = Alternative Supplier Part
OE Numbers used for Cross Reference Purposes Only



209486

Wing - L/H

8191780

FM V2



209487

Wing - R/H

8191781

FM V2



209439

Front Drop Wing - L/H & R/H

20453900

FM V2



290243

Front Drop Wing Bracket - L/H

20535535 20493931

FM V2



290244

Front Drop Wing Bracket - R/H

20535537 20493933

FM V2



Suffix Key; R = Reconditioned Part

OEM = Original Equipment Manufacturer ALT = Alternative Supplier Part

OE Numbers used for Cross Reference Purposes Only



209629 **Main Grill**

21190825 82056727
FH 2008-



209630 **Main Grill Insert**

82322924 82255255
FH 2008-
Black



209731 **Main Grill Hinge - L/H**

82215391 20467142 3175377
FH 2008-



209732 **Main Grill Hinge - R/H**

82215401 20467143 20379341
FH 2008-



209469 **Main Grill Handle - L/H**

20529738 20383545
FH 2008-



Suffix Key; R = Reconditioned Part
OEM = Original Equipment Manufacturer ALT = Alternative Supplier Part
OE Numbers used for Cross Reference Purposes Only



209470 **Main Grill Handle - R/H**
20530146 3175367
FH 2008-



209471 **Main Grill Handle Cover - L/H & R/H**
3175366
FH 2008-



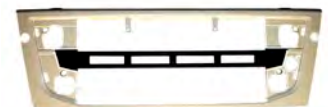
209601 **Main Grill Gas Strut**
20379348
FH 2008-



209631 **Lower Grill**
21445302 82065607 82056840
FH 2008-
White



290017 **Lower Grill**
21445754 82090257 82090255
FH 2008-
with headlamp washers



Suffix Key; R = Reconditioned Part
OEM = Original Equipment Manufacturer ALT = Alternative Supplier Part
OE Numbers used for Cross Reference Purposes Only



209634 **Lower Grill Cover - L/H**
82062209
FH 2008-



209633 **Lower Grill Cover - R/H**
82063911
FH 2008-



209638 **Lower Grill Blank Cover**
21425186 20453960
FH 2008-



209636 **Lower Grill Insert - Outer**
82063513
FH 2008-
Plastic



209635 **Lower Grill Insert - Inner**
82072463
FH 2008-
Steel



Suffix Key; R = Reconditioned Part
OEM = Original Equipment Manufacturer ALT = Alternative Supplier Part
OE Numbers used for Cross Reference Purposes Only



209643 **Lower Grill Lock - L/H**
82060441
FH 2008-



209644 **Lower Grill Lock - R/H**
82060445
FH 2008-



209444 **Corner Panel - L/H**
20379175
FH 2008-



209445 **Corner Panel - R/H**
20379176
FH 2008-



209538 **Corner Panel Garnish - L/H**
20529672 20379358
FH 2008-



Suffix Key; R = Reconditioned Part
OEM = Original Equipment Manufacturer ALT = Alternative Supplier Part
OE Numbers used for Cross Reference Purposes Only



209539 **Corner Panel Garnish - R/H**
20529668 20379357
FH 2008-



209646 **Headlamp Panel - L/H**
82367098 82209788 82053690
FH 2008-



209645 **Headlamp Panel - R/H**
82367957 82367952 82209849 82056986
FH 2008-



209650 **Headlamp Panel Rear Cover - L/H**
21451000 82052484
FH 2008-



209649 **Headlamp Panel Rear Cover - R/H**
21451002 82056991
FH 2008-



Suffix Key; R = Reconditioned Part
OEM = Original Equipment Manufacturer ALT = Alternative Supplier Part
OE Numbers used for Cross Reference Purposes Only



209648 **Headlamp Surround - L/H**

82076158 82056296 21478759

FH 2008-



209647 **Headlamp Surround - R/H**

82076266 21478755

FH 2008-



290022 **Foglamp Blank Plate - L/H**

82066238

FH 2008-



290023 **Foglamp Blank Plate - R/H**

82066335

FH 2008-



209628 **Bumper Support Bracket**

21484901 20467442 20456550

FH 2008-



Suffix Key; R = Reconditioned Part

OEM = Original Equipment Manufacturer ALT = Alternative Supplier Part

OE Numbers used for Cross Reference Purposes Only



209377 Bumper Section - Steel - Centre

20398709
FH 2008-



209378 Bumper Section - Steel - L/H

20398707
FH 2008-



209379 Bumper Section - Steel - R/H

20398708
FH 2008-



209473 Bumper End Cap - L/H

21359176 20453678 20453676
FH 2008-



209474 Bumper End Cap - R/H

21359192 20453679 20453677
FH 2008-



Suffix Key; R = Reconditioned Part

OEM = Original Equipment Manufacturer ALT = Alternative Supplier Part

OE Numbers used for Cross Reference Purposes Only



209405 **Bumper Section - Plastic - Centre**

20529740 3175417
FH 2008-
Black Finished Version



209406 **Bumper Section - Plastic - L/H**

20529741 3175418
FH 2008-
Black Finished Version



209407 **Bumper Section - Plastic - L/H**

20529742 3175419
FH 2008-
Black Finished Version



209440 **Bumper Section - Plastic - Centre**

21359080 20452625
FH 2008-
Grey Unfinished Version



209441 **Bumper Section - Plastic - L/H**

21359082 20452626
FH 2008-
Grey Unfinished Version



Suffix Key; R = Reconditioned Part
OEM = Original Equipment Manufacturer ALT = Alternative Supplier Part
OE Numbers used for Cross Reference Purposes Only



209442 **Bumper Section - Plastic - L/H**

21359090 20452627
FH 2008-
Grey Unfinished Version



209720 **Tow Brace**

1629389
FH 2008-



290211 **Towing Pin**

1629391
FH 2008-



209619 **Lower Bumper Spoiler - Centre Section**

21430599 20456804
FH 2008-



209620 **Lower Bumper Spoiler - L/H Section**

21430600 20456805
FH 2008-



Suffix Key; R = Reconditioned Part
OEM = Original Equipment Manufacturer ALT = Alternative Supplier Part
OE Numbers used for Cross Reference Purposes Only



209621 Lower Bumper Spoiler - R/H Section

21430672 20456806
FH 2008-



209433 Side Wing Extension - L/H

3175929
FH 2008-



209434 Side Wing Extension - R/H

3175930
FH 2008-



209431 Step Panel - L/H

3175927
FH 2008-



209432 Step Panel - R/H

3175928
FH 2008-



Suffix Key; R = Reconditioned Part
OEM = Original Equipment Manufacturer ALT = Alternative Supplier Part
OE Numbers used for Cross Reference Purposes Only



209351 **Step Panel Access Door**

20529765 3981043
FH 2008-



209403 **Lower Step Housing - L/H**

20529638 3175406
FH 2008-



209404 **Lower Step Housing - R/H**

20529640 3175407
FH 2008-



209070 **Top Step - L/H & R/H**

20379439 8191315 8191105
FH 2008-



209412 **Middle / Lower Step - L/H**

20360788
FH 2008-



Suffix Key; R = Reconditioned Part
OEM = Original Equipment Manufacturer ALT = Alternative Supplier Part
OE Numbers used for Cross Reference Purposes Only



209413 Middle / Lower Step - R/H

20360789
FH 2008-



209536 Wing Widener - L/H

20529685 3175937
FH 2008-



209537 Wing Widener - R/H

20529686 3175938
FH 2008-



290131 Front Drop Wing - L/H & R/H

82637696 82637695
FH 2008-



290243 Front Drop Wing Bracket - L/H

20535535 20493931
FH 2008-



Suffix Key; R = Reconditioned Part

OEM = Original Equipment Manufacturer ALT = Alternative Supplier Part

OE Numbers used for Cross Reference Purposes Only



290244

Front Drop Wing Bracket - R/H

20535537 20493933

FH 2008-



Suffix Key; R = Reconditioned Part

OEM = Original Equipment Manufacturer ALT = Alternative Supplier Part

OE Numbers used for Cross Reference Purposes Only



290038 **Front Panel**

21393486 82257549
FM 2010-



290255ALT **Grill**

82308884 82415319
FM 2010-



290027 **Main Grill Hinge - L/H**

82402327 20476396
FM 2010-



290028 **Main Grill Hinge - R/H**

82402332 20476392
FM 2010-



209469 **Main Grill Handle - L/H**

20529738 20383545
FM 2010-



Suffix Key; R = Reconditioned Part

OEM = Original Equipment Manufacturer ALT = Alternative Supplier Part

OE Numbers used for Cross Reference Purposes Only



209470 **Main Grill Handle - R/H**
20530146 3175367
FM 2010-



209471 **Main Grill Handle Cover - L/H & R/H**
3175366
FM 2010-



209612 **Main Grill Gas Strut**
20379349
FM 2010-



290037 **Lower Grill**
21397813 21397247 82266437
FM 2010-



209641 **Lower Grill Hinge - L/H**
20545094
FM 2010-



Suffix Key; R = Reconditioned Part
OEM = Original Equipment Manufacturer ALT = Alternative Supplier Part
OE Numbers used for Cross Reference Purposes Only



209640 Lower Grill Hinge - R/H

20545095
FM 2010-



209643 Lower Grill Lock - L/H

82060441
FM 2010-



209644 Lower Grill Lock - R/H

82060445
FM 2010-



209636 Lower Grill Insert - Outer

82063513
FM 2010-
Plastic



209635 Lower Grill Insert - Inner

82072463
FM 2010-
Steel



Suffix Key; R = Reconditioned Part
OEM = Original Equipment Manufacturer ALT = Alternative Supplier Part
OE Numbers used for Cross Reference Purposes Only



209401

Corner Panel - L/H

20379171

FM 2010-



209402

Corner Panel - R/H

20379172

FM 2010-



209538

Corner Panel Garnish - L/H

20529672 20379358

FM 2010-



209539

Corner Panel Garnish - R/H

20529668 20379357

FM 2010-



209646

Headlamp Panel - L/H

82367098 82209788 82053690

FM 2010-



Suffix Key; R = Reconditioned Part

OEM = Original Equipment Manufacturer ALT = Alternative Supplier Part

OE Numbers used for Cross Reference Purposes Only



209645 **Headlamp Panel - R/H**

82367957 82367952 82209849 82056986
FM 2010-



209650 **Headlamp Panel Rear Cover - L/H**

21451000 82052484
FM 2010-



209649 **Headlamp Panel Rear Cover - R/H**

21451002 82056991
FM 2010-



209648 **Headlamp Surround - L/H**

82076158 82056296 21478759 82090994
FM 2010-



209647 **Headlamp Surround - R/H**

82076266 21478755 82091005
FM 2010-



Suffix Key; R = Reconditioned Part
OEM = Original Equipment Manufacturer ALT = Alternative Supplier Part
OE Numbers used for Cross Reference Purposes Only



290022 Foglamp Blank Plate - L/H

82066238
FM 2010-



290023 Foglamp Blank Plate - R/H

82066335
FM 2010-



209628 Bumper Support Bracket

21484901 20467442 20456550
FM 2010-



209377 Bumper Section - Steel - Centre

20398709
FM 2010-



209378 Bumper Section - Steel - L/H

20398707
FM 2010-



Suffix Key; R = Reconditioned Part
OEM = Original Equipment Manufacturer ALT = Alternative Supplier Part
OE Numbers used for Cross Reference Purposes Only



209379 Bumper Section - Steel - R/H

20398708
FM 2010-



209473 Bumper End Cap - L/H

21359176 20453678 20453676
FM 2010-



209474 Bumper End Cap - R/H

21359192 20453679 20453677
FM 2010-



209405 Bumper Section - Plastic - Centre

20529740 3175417
FM 2010-
Black Finished Version



209406 Bumper Section - Plastic - L/H

20529741 3175418
FM 2010-
Black Finished Version



Suffix Key; R = Reconditioned Part

OEM = Original Equipment Manufacturer ALT = Alternative Supplier Part

OE Numbers used for Cross Reference Purposes Only



209407 **Bumper Section - Plastic - R/H**

20529742 3175419
FM 2010-
Black Finished Version



209440 **Bumper Section - Plastic - Centre**

21359080 20425625
FM 2010-
Grey Unfinished Version



209441 **Bumper Section - Plastic - L/H**

21359082 20425626
FM 2010-
Grey Unfinished Version



209442 **Bumper Section - Plastic - R/H**

21359090 20425627
FM 2010-
Grey Unfinished Version



209720 **Tow Brace**

1629389
FM 2010-



Suffix Key; R = Reconditioned Part
OEM = Original Equipment Manufacturer ALT = Alternative Supplier Part
OE Numbers used for Cross Reference Purposes Only



290211

Towing Pin

1629391

FM 2010-



209619

Lower Bumper Spoiler - Centre Section

21430599 20456804

FM 2010-



209620

Lower Bumper Spoiler - L/H Section

21430600 20456805

FM 2010-



209621

Lower Bumper Spoiler - R/H Section

21430672 20456806

FM 2010-



209492

Step Panel - L/H

20537185 20425469 3175158

FM 2010-



Suffix Key; R = Reconditioned Part

OEM = Original Equipment Manufacturer ALT = Alternative Supplier Part

OE Numbers used for Cross Reference Purposes Only



209493 **Step Panel - R/H**

20529483 3175159
FM 2010-



209351 **Step Panel Access Door**

20529765 3981043
FM 2010-



209403 **Lower Step Housing - L/H**

20529638 3175406
FM 2010-



209404 **Lower Step Housing - R/H**

20529640 3175407
FM 2010-



209358 **Top Step - L/H & R/H**

1063726
FM 2010-



Suffix Key; R = Reconditioned Part
OEM = Original Equipment Manufacturer ALT = Alternative Supplier Part
OE Numbers used for Cross Reference Purposes Only



209412 Lower Step - L/H

20360788
FM 2010-



209413 Lower Step - R/H

20360789
FM 2010-



290136 Top Step Bracket - L/H

20502235
FM 2010-



290137 Top Step Bracket - R/H

20502239
FM 2010-



290138 Step Panel Bracket - L/H

20489289 3981488
FM 2010-



Suffix Key; R = Reconditioned Part
OEM = Original Equipment Manufacturer ALT = Alternative Supplier Part
OE Numbers used for Cross Reference Purposes Only



290139 **Step Panel Bracket - R/H**

3981489
FM 2010-



209486 **Wing - L/H**

8191780
FM 2010-



209487 **Wing - R/H**

8191781
FM 2010-



209439 **Front Drop Wing - L/H & R/H**

20453900
FM 2010-



290243 **Front Drop Wing Bracket - L/H**

20535535 20493931
FM 2010-



Suffix Key; R = Reconditioned Part
OEM = Original Equipment Manufacturer ALT = Alternative Supplier Part
OE Numbers used for Cross Reference Purposes Only



290244 **Front Drop Wing Bracket - R/H**

20535537 20493933
FM 2010-



290127 **Main Panel**

82360122
FH V4



290190 **Upper Grill**

84027588
FH V4



290129 **Middle Grill**

84033228
FH V4



290128 **Lower Grill**

82491903
FH V4



Suffix Key; R = Reconditioned Part
OEM = Original Equipment Manufacturer ALT = Alternative Supplier Part
OE Numbers used for Cross Reference Purposes Only



290093 **Lower Grill Mesh - Upper/Inner**
82258426
FH V4
Steel



290100 **Lower Grill Mesh - Upper/Outer**
82220161
FH V4
Plastic



290193 **Lower Grill Trim - Upper**
82180491
FH V4



290094 **Lower Grill Mesh - Lower/Inner**
82255346
FH V4
Steel



290101 **Lower Grill Mesh - Lower/Outer**
82220206
FH V4
Plastic



Suffix Key; R = Reconditioned Part
OEM = Original Equipment Manufacturer ALT = Alternative Supplier Part
OE Numbers used for Cross Reference Purposes Only



290194 **Lower Grill Trim - Lower**
82177794
FH V4



290192 **Corner Panel - L/H**
82858486
FH V4



290191 **Corner Panel - R/H**
82858516
FH V4



290121 **Headlamp Surround - L/H**
82882834 21874450
FH V4



290122 **Headlamp Surround - R/H**
82882832 21874457
FH V4



Suffix Key; R = Reconditioned Part
OEM = Original Equipment Manufacturer ALT = Alternative Supplier Part
OE Numbers used for Cross Reference Purposes Only



290165 **Headlamp Surround Air Duct - L/H**

82884080
FH V4



290166 **Headlamp Surround Air Duct - R/H**

82884084
FH V4



290196 **Headlamp Garnish Panel - L/H**

82446592
FH V4



290195 **Headlamp Garnish Panel - R/H**

82453926
FH V4



290198ALT **Headlamp Surround Blank - LH**

21413734
FH V4



Suffix Key; R = Reconditioned Part
OEM = Original Equipment Manufacturer ALT = Alternative Supplier Part
OE Numbers used for Cross Reference Purposes Only



290197ALT **Headlamp Surround Blank - RH**

21413774
FH V4



290163 **Headlamp Surround Rear Cover - L/H**

84139886 84034945
FH V4



290164 **Headlamp Surround Rear Cover - R/H**

84139933 84034942
FH V4



290219 **Headlamp Surround Bracket - L/H**

84046776
FH V4



290220 **Headlamp Surround Bracket - L/H**

84058023
FH V4



Suffix Key; R = Reconditioned Part
OEM = Original Equipment Manufacturer ALT = Alternative Supplier Part
OE Numbers used for Cross Reference Purposes Only



290084 **Bumper Section - Steel - Centre**

21838943
FH V4



290085 **Bumper Section - Steel - L/H**

21838944
FH V4



290086 **Bumper Section - Steel - R/H**

21838945
FH V4



290221 **Bumper Bracket - L/H**

82928883
FH V4



290222 **Bumper Bracket - R/H**

82943981
FH V4



Suffix Key; R = Reconditioned Part
OEM = Original Equipment Manufacturer ALT = Alternative Supplier Part
OE Numbers used for Cross Reference Purposes Only



290225 **Bumper Section - Plastic - Centre**

21413787 82090733

FH V4

Black Finished Version



290223 **Bumper Section - Plastic - L/H**

21412789 82090731

FH V4

Black Finished Version



290224 **Bumper Section - Plastic - R/H**

21413786 82090735

FH V4

Black Finished Version



290087 **Bumper Section - Plastic - Centre**

21316576

FH V4

Grey Unfinished Version



290088 **Bumper Section - Plastic - L/H**

21316575

FH V4

Grey Unfinished Version



Suffix Key; R = Reconditioned Part

OEM = Original Equipment Manufacturer ALT = Alternative Supplier Part

OE Numbers used for Cross Reference Purposes Only



290089 **Bumper Section - Plastic - L/H**
21316577
FH V4
Grey Unfinished Version



290090 **Lower Bumper Spoiler - Centre Section**
21495267
FH V4
Black Finished Version



290091 **Lower Bumper Spoiler - L/H Section**
21495266
FH V4
Black Finished Version



290092 **Lower Bumper Spoiler - R/H Section**
21495268
FH V4
Black Finished Version



290228 **Lower Bumper Spoiler - Centre Section**
82101912
FH V4
Grey Unfinished Version



Suffix Key; R = Reconditioned Part
OEM = Original Equipment Manufacturer ALT = Alternative Supplier Part
OE Numbers used for Cross Reference Purposes Only



290226 **Lower Bumper Spoiler - L/H Section**
82101910
FH V4
Grey Unfinished Version



290227 **Lower Bumper Spoiler - R/H Section**
82101914
FH V4
Grey Unfinished Version



290167 **Upper Step Panel - L/H**
82136982
FH V4



290168 **Upper Step Panel - R/H**
82141521
FH V4



290095 **Lower Step Housing - L/H**
82141971
FH V4
Textured Finish



Suffix Key; R = Reconditioned Part
OEM = Original Equipment Manufacturer ALT = Alternative Supplier Part
OE Numbers used for Cross Reference Purposes Only



290096 **Lower Step Housing - R/H**
82142373
FH V4
Textured Finish



290199 **Lower Step Housing - L/H**
21392183
FH V4
Smooth Finish



290200 **Lower Step Housing - R/H**
21392187
FH V4
Smooth Finish



290123 **Lower Step - L/H**
82171603
FH V4



290124 **Lower Step - R/H**
82859306
FH V4



Suffix Key; R = Reconditioned Part
OEM = Original Equipment Manufacturer ALT = Alternative Supplier Part
OE Numbers used for Cross Reference Purposes Only

Direct Sourcing Solutions
Volvo Replacement Parts Catalogue 2020
Section 18; Cab & Body



290275ALT **Main Grill**
82437188
FM V4



290251ALT **Cab Corner Panel - L/H**
82430056
FM V4



290249ALT **Cab Corner Panel - R/H**
82430057
FM V4



290248ALT **Footstep Panel - L/H**
21520015
FM V4



290247ALT **Footstep Panel - R/H**
21520119
FM V4



Suffix Key; R = Reconditioned Part
OEM = Original Equipment Manufacturer ALT = Alternative Supplier Part
OE Numbers used for Cross Reference Purposes Only

Direct Sourcing Solutions
Volvo Replacement Parts Catalogue 2020
Section 18; Cab & Body



290038 **Front Panel**
21393486 82257549
FMX V1



290255ALT **Grill**
82308884 82415319
FMX V1



290027 **Main Grill Hinge - L/H**
82402327 20476396
FMX V1



290028 **Main Grill Hinge - R/H**
82402332 20476392
FMX V1



209469 **Main Grill Handle - L/H**
20529738 20383545
FMX V1



Suffix Key; R = Reconditioned Part
OEM = Original Equipment Manufacturer ALT = Alternative Supplier Part
OE Numbers used for Cross Reference Purposes Only



209470 **Main Grill Handle - R/H**
20530146 3175367
FMX V1



209471 **Main Grill Handle Cover - L/H & R/H**
3175366
FMX V1



209612 **Main Grill Gas Strut**
20379349
FMX V1



209401 **Corner Panel - L/H**
20379171
FMX V1



209402 **Corner Panel - R/H**
20379172
FMX V1



Suffix Key; R = Reconditioned Part
OEM = Original Equipment Manufacturer ALT = Alternative Supplier Part
OE Numbers used for Cross Reference Purposes Only



209538 **Corner Panel Garnish - L/H**
20529672 20379358
FMX V1



209539 **Corner Panel Garnish - R/H**
20529668 20379357
FMX V1



290201 **Headlamp Surround - L/H**
21404042
FMX V1



290202 **Headlamp Surround - R/H**
21404043
FMX V1



290207 **Headlamp Protector - L/H**
82266040
FMX V1



Suffix Key; R = Reconditioned Part
OEM = Original Equipment Manufacturer ALT = Alternative Supplier Part
OE Numbers used for Cross Reference Purposes Only



290206 **Headlamp Protector - R/H**

82266039
FMX V1



209492 **Step Panel - L/H**

20537185 20425469 3175158
FMX V1



209493 **Step Panel - R/H**

20529483 3175159
FMX V1



209351 **Step Panel Access Door**

20529765 3981043
FMX V1



209403 **Lower Step Housing - L/H**

20529638 3175406
FMX V1



Suffix Key; R = Reconditioned Part
OEM = Original Equipment Manufacturer ALT = Alternative Supplier Part
OE Numbers used for Cross Reference Purposes Only



209404 Lower Step Housing - R/H

20529640 3175407
FMX V1



209358 Top Step - L/H & R/H

1063726
FMX V1



209412 Lower Step - L/H

20360788
FMX V1



209413 Lower Step - R/H

20360789
FMX V1



290136 Top Step Bracket - L/H

20502235
FMX V1



Suffix Key; R = Reconditioned Part
OEM = Original Equipment Manufacturer ALT = Alternative Supplier Part
OE Numbers used for Cross Reference Purposes Only



290137 **Top Step Bracket - R/H**

20502239
FMX V1



290138 **Step Panel Bracket - L/H**

20489289 3981488
FMX V1



290139 **Step Panel Bracket - R/H**

3981489
FMX V1



Suffix Key; R = Reconditioned Part

OEM = Original Equipment Manufacturer ALT = Alternative Supplier Part

OE Numbers used for Cross Reference Purposes Only



290235ALT **Headlamp Surround - L/H**

21689970 21520198
FMX V2



290236ALT **Headlamp Surround - R/H**

21689971 21520214
FMX V2



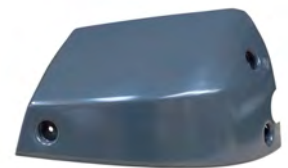
290237ALT **Bumper Centre**

82467991
FMX V2



290238ALT **Bumper Corner - L/H**

82467170
FMX V2



290239ALT **Bumper Corner - R/H**

82467171
FMX V2



Suffix Key; R = Reconditioned Part
OEM = Original Equipment Manufacturer ALT = Alternative Supplier Part
OE Numbers used for Cross Reference Purposes Only



290248ALT **Footstep Panel - L/H**

21520015
FMX V2



290247ALT **Footstep Panel - R/H**

21520119
FMX V2



Suffix Key; R = Reconditioned Part

OEM = Original Equipment Manufacturer ALT = Alternative Supplier Part

OE Numbers used for Cross Reference Purposes Only



290005

Grille Lock

20425414

All FH Vehicles, All FM Vehicles



Suffix Key; R = Reconditioned Part

OEM = Original Equipment Manufacturer ALT = Alternative Supplier Part

OE Numbers used for Cross Reference Purposes Only



209087 **Rear Wing Top**
8155808
FH V1, FM V1
Ribbed Version



209090 **Rear Wing Tensioner Rubber**
8156556
FH V1, FM V1
Ribbed Version



Suffix Key; R = Reconditioned Part

OEM = Original Equipment Manufacturer ALT = Alternative Supplier Part

OE Numbers used for Cross Reference Purposes Only



209414 **Rear Wing Top**

20936759 20722652 3171391 1079965

FH V1 & V2, FM V1 & V2

Low Arch



209191 **Rear Wing Top**

20723630 20549696 3171390

FH V1 & V2, FM V1 & V2

Normal Arch



209762 **Rear Wing Top**

20936769 20722654 3171392 1079962

FH V1 & V2, FM V1 & V2

High Arch



209313 **Rear Wing Section - Front / Rear**

20392544 20392599 1079960

FH V1 & V2, FM V1 & V2



209484 **Rear Wing Section Liner**

1079997 1079952

FH V1 & V2, FM V1 & V2



Suffix Key; R = Reconditioned Part

OEM = Original Equipment Manufacturer ALT = Alternative Supplier Part

OE Numbers used for Cross Reference Purposes Only



209759 Rear Wing Strengthening Brkt

3988630
 FH V1 & V2, FM V1 & V2



290021 Rear Wing Strengthening Brkt

3988631
 FH V1 & V2, FM V1 & V2



290079 Rear Wing Strengthening Brkt Screw

977170 975387
 FH V1 & V2, FM V1 & V2



290080 Rear Wing Strengthening Brkt Kit

N/A
 FH V1 & V2, FM V1 & V2



209296 Rear Wing Tensioner Rubber

1079981
 FH V1 & V2, FM V1 & V2
 Early Type Rubber



Suffix Key; R = Reconditioned Part
 OEM = Original Equipment Manufacturer ALT = Alternative Supplier Part
OE Numbers used for Cross Reference Purposes Only



209547 Rear Wing Tensioner Rubber

20498623
FH V1 & V2, FM V1 & V2
Late Type Rubber



209448 Rear Wing Clamp

20583440 3987253
FH V1 & V2, FM V1 & V2



209415 Rear Wing Clamp

20583434 20498620 3987252
FH V1 & V2, FM V1 & V2



209735 Rear Wing Wedge

20721840 1079992
FH V1 & V2, FM V1 & V2



290001 Wing Bracket

20392000
FH V2, FM V2

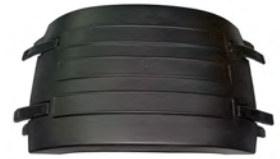


Suffix Key; R = Reconditioned Part
OEM = Original Equipment Manufacturer ALT = Alternative Supplier Part
OE Numbers used for Cross Reference Purposes Only



290024 **Rear Wing Top**

21094388 21094384
FH 2008, FH V4, FM 2010-, FM V4 FE
c/w Straps. Low Arch



6290005 **Rear Wing Top**

21094390 21094386
FH 2008, FH V4, FM 2010-, FM V4 FE
c/w Straps. Low Arch



690013 **Rear Wing Top**

21094389 21094385
FH 2008, FH V4, FM 2010-, FM V4 FE
c/w Straps. Normal Arch



290002 **Rear Wing Top**

21094387 21094383
FH 2008, FH V4, FM 2010-, FM V4 FE
c/w Straps. High Arch



290012 **Rear Wing Section - Front - L/H & R/H**

21094391
FH 2008, FH V4, FM 2010-, FM V4 FE



Suffix Key; R = Reconditioned Part

OEM = Original Equipment Manufacturer ALT = Alternative Supplier Part

OE Numbers used for Cross Reference Purposes Only



290025 **Rear Wing Section - Front - L/H**

21094393

FH 2008, FH V4, FM 2010-, FM V4 FE



290026 **Rear Wing Section - Front - R/H**

21094392

FH 2008, FH V4, FM 2010-, FM V4 FE



290011 **Rear Wing Section - Rear**

21094394

FH 2008, FH V4, FM 2010-, FM V4 FE



290003 **Rear Wing Tensioner Rubber**

21094457

FH 2008, FH V4, FM 2010-, FM V4 FE



290074 **Rear Wing Washer**

21094453

FH 2008, FH V4, FM 2010-, FM V4 FE



Suffix Key; R = Reconditioned Part
OEM = Original Equipment Manufacturer ALT = Alternative Supplier Part
OE Numbers used for Cross Reference Purposes Only



290075 Rear Wing Bracket

21094454
FH 2008, FH V4, FM 2010-, FM V4 FE



290076 Rear Wing Bracket

21094456
FH 2008, FH V4, FM 2010-, FM V4 FE



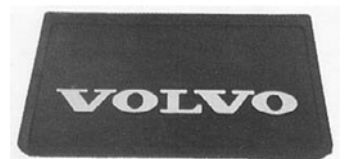
290001 Rear Wing Bracket

20392000
FH 2008, FH V4, FM 2010-, FM V4



209092 Mudflap c/w Volvo Logo

3943977 1594360
All Vehicles
No Spray Suppression



209693 Mudflap c/w Volvo Logo

N/A
All Vehicles



Suffix Key; R = Reconditioned Part
OEM = Original Equipment Manufacturer ALT = Alternative Supplier Part
OE Numbers used for Cross Reference Purposes Only



209192 Rear Wing Stay - 3 Bolt Fix

8154385 3162274 1077451

FH V1, FM V1

780mm



209485 Rear Wing Stay - 4 Bolt Fix

20466894 3197850 3177850

FH V1 & V2, FM V1 & V2

615mm



209312 Rear Wing Stay - 4 Bolt Fix

20466895 3197851

FH V1 & V2, FM V1 & V2

665mm



690025 Rear Wing Stay - 4 Bolt Fix

1079959

FH V1 & V2, FM V1 & V2

673MM



209610 Rear Wing Stay Bracket

20382890

FH V1 & V2, FM V1 & V2



Suffix Key; R = Reconditioned Part
OEM = Original Equipment Manufacturer ALT = Alternative Supplier Part
OE Numbers used for Cross Reference Purposes Only



209754 Rear Wing Stay Mount Bracket

20383038

FH V1 & V2, FM V1 & V2



290016 Rear Wing Stay

22192015 21094413

FH 2008, FH V4, FM 2010-, FM V4



290014 Rear Wing Bracket

21090272

FH 2008, FH V4, FM 2010-, FM V4



290015 Rear Wing Bracket

21213202

FH 2008, FH V4, FM 2010-, FM V4



Suffix Key; R = Reconditioned Part

OEM = Original Equipment Manufacturer ALT = Alternative Supplier Part

OE Numbers used for Cross Reference Purposes Only



DIRECT SOURCING SOLUTIONS LTD

Units 8A & 8B
Beansheaf Industrial Park
Tofts Road
Kirby Misperton
Malton
N. Yorkshire
YO17 6BG

Tel: +44 (0)1653 668179

E mail: sales@direct-sourcing-solutions.com
web: www.direct-sourcing-solutions.com